



HC Precast System IBS Factory

Mock up panel for Reputable Company from Japan

12th & 13th September 2018



**Loadbearing Monolithic Wall System
Wet Joints with Modular Shear Keys
Box System**



12th & 13th August 2018 : - Mock up panel for Reputable Company from Japan



12th & 13th August 2018 : - Mock up panel for Reputable Company from Japan



12th & 13th August 2018 : - Mock up panel for Reputable Company from Japan



12th & 13th August 2018 : - Mock up panel for Reputable Company from Japan



12th & 13th August 2018 : - Mock up panel for Reputable Company from Japan



12th & 13th August 2018 : - Mock up panel for Reputable Company from Japan



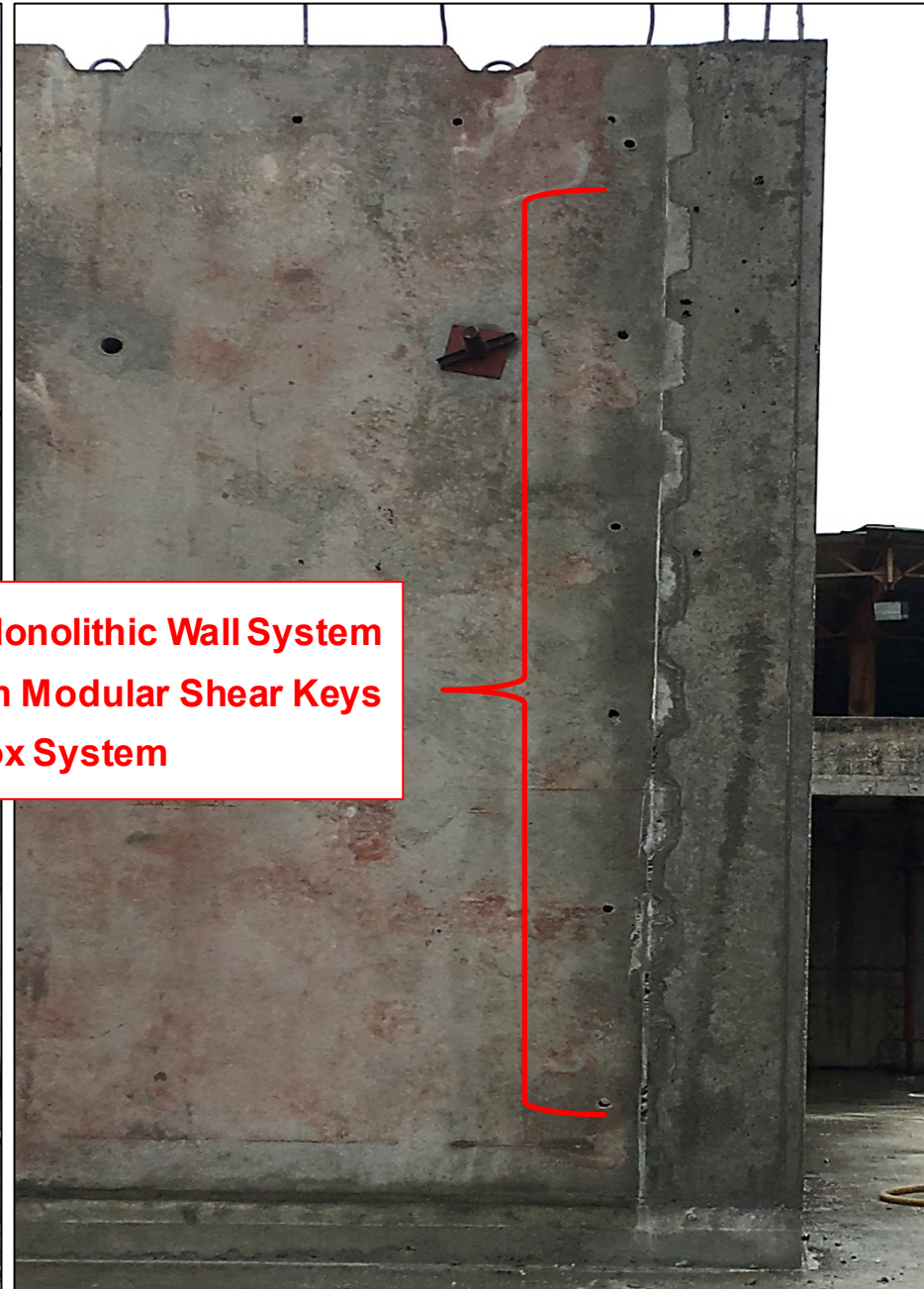
12th & 13th August 2018 : - Mock up panel for Reputable Company from Japan



12th & 13th August 2018 : - Mock up panel for Reputable Company from Japan



**Loadbearing Monolithic Wall System
Wet Joints with Modular Shear Keys
Box System**



12th & 13th August 2018 : - Mock up panel for Reputable Company from Japan

Training unit 12 years without any covering & waterproofing



PURCHASE ORDER

		Deliver To	
Company Name	HC PRECAST SYSTEM SDN BHD No. 23B, Jalan Seri Sarawak 20B/KS2, Taman Seri Andalas, 41200 Klang, Selangor Darul Ehsan.	Company Name	
Address		Address	
Tel	603-3325 8995	Tel	
Contact Person	Dato' Fadzil Bin Ahmad	Contact Person	SIM TECK CHEN

Notes & instructions

1. Lump sum amount RM7,025 to complete all the work that mentioned at your proposal (refer to attachment).
2. Skimcoat to be applied at the split level and joint for verifying the quality without additional cost.
3. _____ doesn't not for the demolishing of mock-up.

SUBTOTAL (RM)	RM	7,025.00
OTHERs	N/A	
TOTAL (RM)	RM	7,025.00

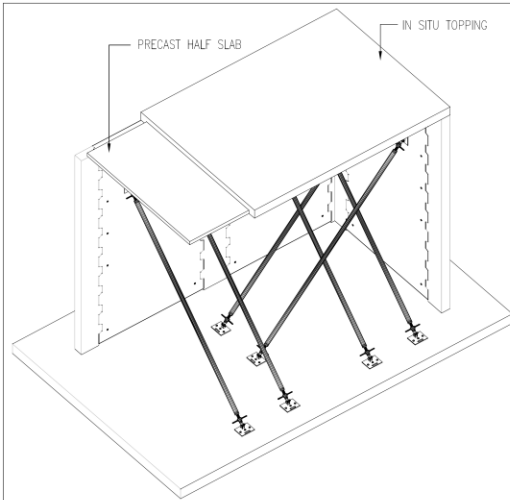
Prepared By:

 7/9/2018
SIM TECK CHEN
DESIGN & PRODUCTION DIVISION

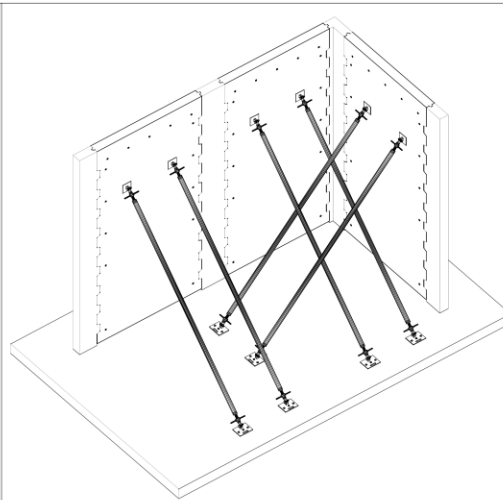
Approved By:

Yasuhiro Nishikawa
Director of

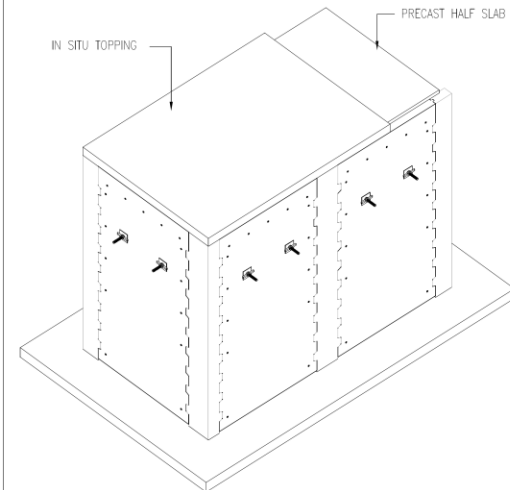
12th & 13th August 2018 : - Full 3D Built-Up Digital Model & Sequential Flow from Paper to Property



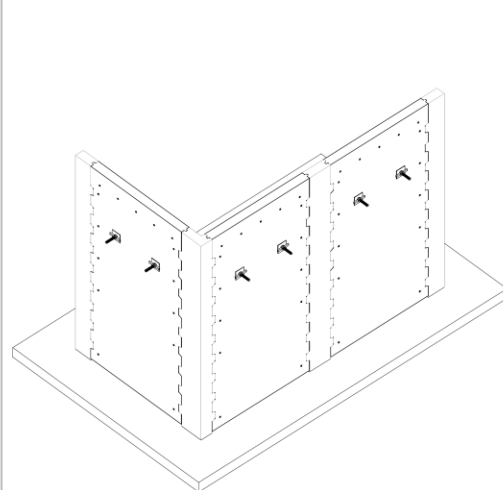
3D VIEW - FRONT (LEFT SIDE) - WITH 1st FLOOR SLAB



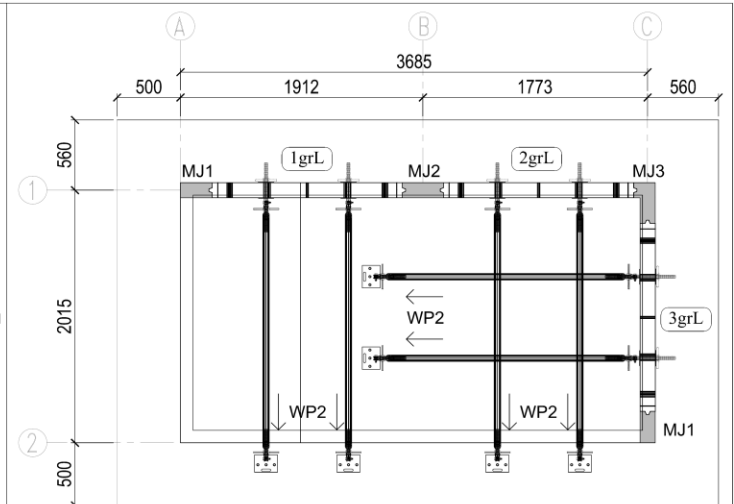
3D VIEW - FRONT (LEFT SIDE) - WITHOUT 1st FLOOR SLAB



3D VIEW - REAR (RIGHT SIDE) - WITH 1st FLOOR SLAB



3D VIEW - REAR (RIGHT SIDE) - WITHOUT 1st FLOOR SLAB



PLAN VIEW

MODIFIED JOINT SCHEDULE

NO.	COLUMN	SHAPE	QTY
1.	MJ1		2
2.	MJ2		1
3.	MJ3		1

NOTE:

1. PRECAST WALL PANELS TO BE CONCRETE GRADE 30
2. CAST IN-SITU WET JOINT TO BE CONCRETE GRADE 25
3. CAST IN-SITU GROUND SLAB TO BE CONCRETE GRADE 30 / GRADE 25
4. REINFORCEMENT LAPPING 50D

SYSTEM PROVIDER



DETAILS SHOWN IN THIS DRAWING ARE PROPERTY OF HC PRECAST SYSTEM & PROTECTED BY PATENTS. ALL COPYRIGHT ARE RESERVED. (U.S. 6,829,870 B2) & (MY-124213-A)

HC PRECAST SYSTEM SDN. BHD. (586697-M)
No.238, Jalan Seri Sarawak 208/KS2, Taman Seri Andalas,
41200 Klang, Selangor D.E. Tel:03-3323 5999 Fax:03-3323 8993
e-mail:enquiry@hccprecast.com.my, Http://www.hccprecast.com.my

MANUFACTURER

HC MANUFACTURING SDN. BHD. (585570-T)
No.23-1, Jalan Seri Sarawak 208/KS2, Taman Seri Andalas,
41200 Klang, Selangor D.E. Tel:03-3323 7999 Fax:03-3323 8993

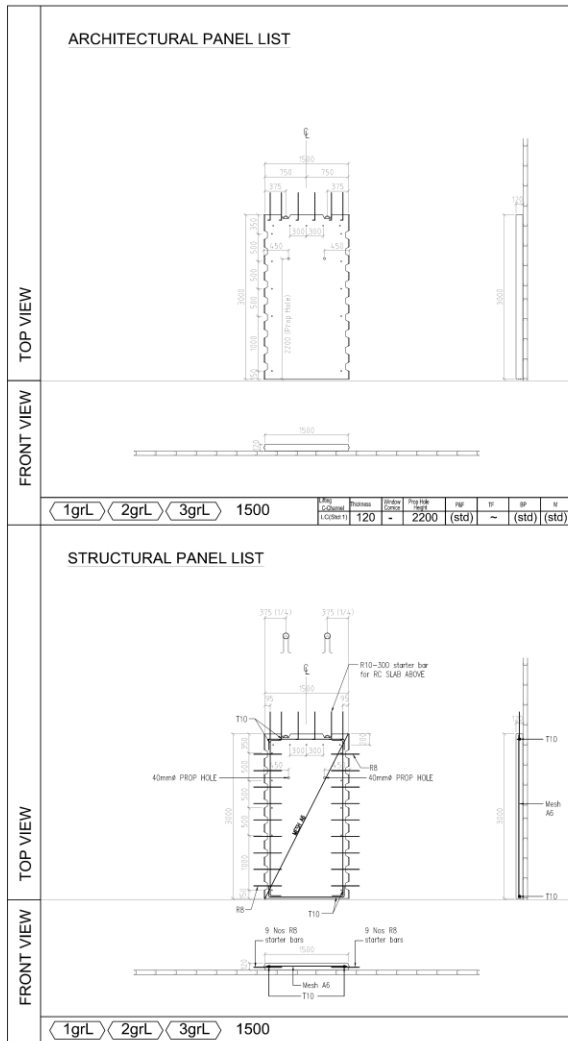
DRAWN :	HC
DATE :	AUG 2018
CHECKED :	3983
EXAMPT :	3983
APPROD :	3983
SCALE :	NTS

**Mock up panel for
Reputable Company
from Japan**

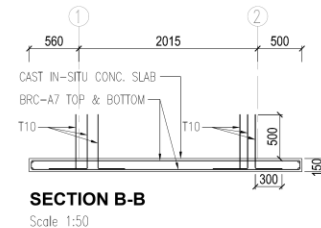
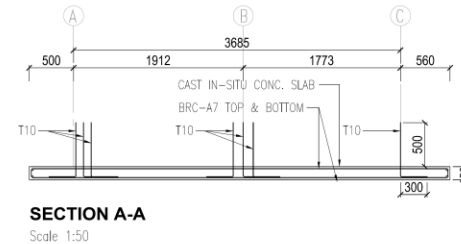
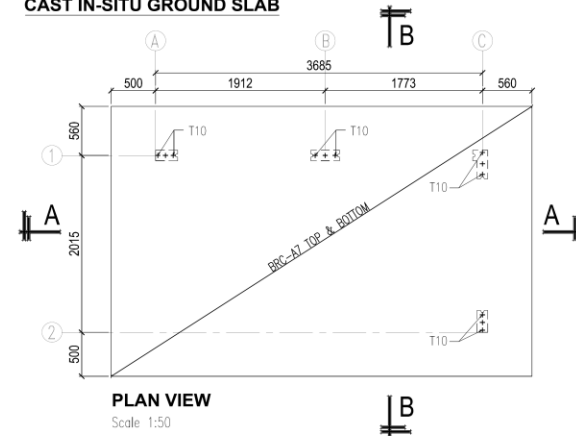
DRAWING TITLE :

PROPOSAL 1
3D VIEWS, PLAN VIEW &
MODIFIED JOINT SCHEDULE

DRAWING NO :	HC/PNH/P1/01	REV :	
SYSTEM :	-	REV :	-



CAST IN-SITU GROUND SLAB



- NOTE:**
1. PRECAST WALL PANELS TO BE CONCRETE GRADE 30
 2. CAST IN-SITU WET JOINT TO BE CONCRETE GRADE 25
 3. CAST IN-SITU GROUND SLAB TO BE CONCRETE GRADE 30 / GRADE 25
 4. REINFORCEMENT LAPPING 50D



SYSTEM PROVIDER
HC PRECAST SYSTEM SDN. BHD. (586697-M)
No.238, Jalan Seri Sarawak 208/KS2, Taman Seri Andalas,
41200 Klang, Selangor D.E. Tel:03-3323 5999 Fax:03-3323 8993
e-mail:enquiry@hccprecast.com.my, Http://www.hccprecast.com.my

DETAILS SHOWN IN THIS DRAWING ARE PROPERTY OF HC PRECAST SYSTEM & PROTECTED BY PATENTS. ALL COPYRIGHT ARE RESERVED. (U.S. 6,829,870 B2) & (MY-124213-A)

MANUFACTURER
HC MANUFACTURING SDN. BHD. (585570-T)
No.23-1, Jalan Seri Sarawak 208/KS2, Taman Seri Andalas,
41200 Klang, Selangor D.E. Tel:03-3323 7999 Fax:03-3323 8993

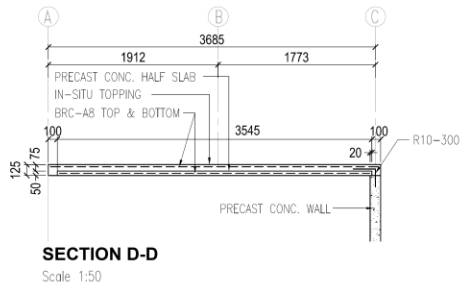
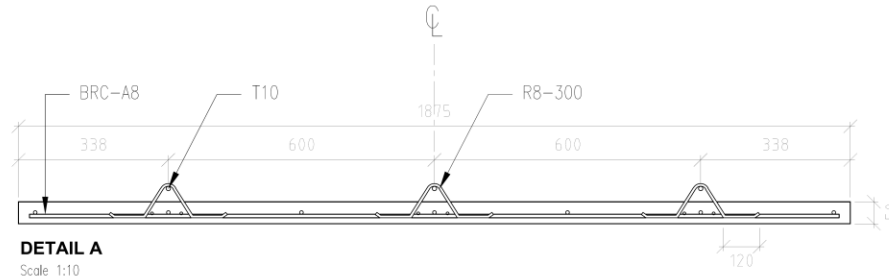
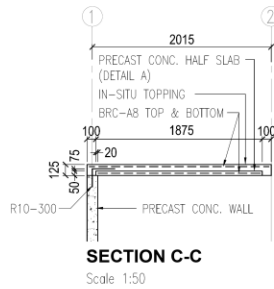
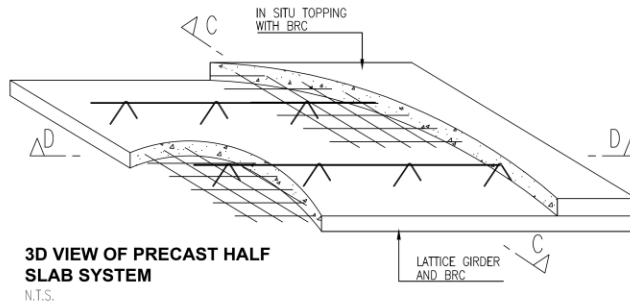
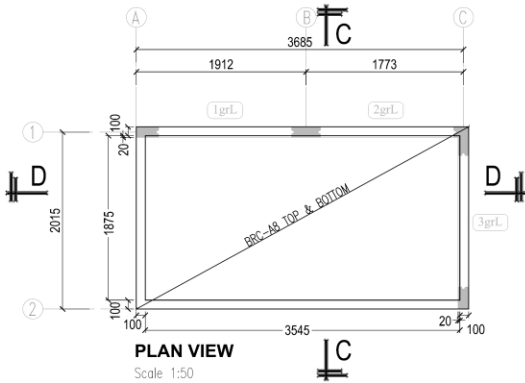
DRAWN :	HC
DATE :	AUG 2018
CHECKED :	3983
EXAMPT :	3983
APPROD :	3983
SCALE :	NTS

**Mock up panel for
Reputable Company
from Japan**

DRAWING TITLE :		PROPOSAL I ARCHITECTURAL & STRUCTURAL PANEL LIST, CAST IN-SITU GROUND SLAB
DRAWING NO :	HC/PNH/P1/02	REV : REV : REV :
SYSTEM :	-	-

12th & 13th August 2018 : - Full 3D Built-Up Digital Model & Sequential Flow from Paper to Property

PRECAST HALF SLAB (1ST FLOOR)



- NOTE:**
1. PRECAST WALL PANELS TO BE CONCRETE GRADE 30
 2. CAST IN-SITU WET JOINT TO BE CONCRETE GRADE 25
 3. CAST IN-SITU GROUND SLAB TO BE CONCRETE GRADE 30 / GRADE 25
 4. REINFORCEMENT LAPPING 50D

SYSTEM PROVIDER



HC PRECAST SYSTEM SDN. BHD. (586697-M)
No.238, Jalan Seri Sarawak 208/KS2, Taman Seri Andalas,
41200 Klang, Selangor D.E. Tel:03-3323 5999 Fax:03-3323 8993
e-mail:enquiry@hccprecast.com.my, Http://www.hccprecast.com.my

DETAILS SHOWN IN THIS DRAWING ARE PROPERTY OF HC PRECAST SYSTEM & PROTECTED BY PATENTS. ALL COPYRIGHT ARE RESERVED. (U.S. 6,829,870 B2) & (MY-124213-A)

MANUFACTURER

HC MANUFACTURING SDN. BHD. (585570-T)
No.23-1, Jalan Seri Sarawak 208/KS2, Taman Seri Andalas,
41200 Klang, Selangor D.E. Tel:03-3323 7999 Fax:03-3323 8993

DRAWN :	HC
DATE :	AUG 2018
CHECKED :	3983
EXAMPT :	3983
APPROD :	3983
SCALE :	N.T.S

**Mock up panel for
Reputable Company
from Japan**

DRAWING TITLE :

PROPOSAL 1
PRECAST HALF SLAB

DRAWING NO :	HC/PNH/P1/03	REV :	-
SYSTEM :	-	REV :	-

HCPS Mock up panel for Reputable Company from Japan

	TOTAL CONCRETE VOLUME (m ³)
PROPOSAL 1	CAST IN -SITU GROUND SLAB = 2.19 PRECAST WALL PANELS = 1.59 CAST IN -SITU WET JOINTS = 0.47 PRECAST HALF SLAB = 0.33 IN-SITU TOPPING = 0.64



SYSTEM PROVIDER
HC PRECAST SYSTEM SDN. BHD. (586697-M)
 No.238, Jalan Seri Sarawak 208/KS2, Taman Seri Andalas,
 41200 Klang, Selangor D.E. Tel:03-3323 5999 Fax:03-3323 8993
 e-mail: enquiry@hccprecast.com.my, Http://www.hccprecast.com.my
DETAILS SHOWN IN THIS DRAWING ARE PROPERTY OF HC PRECAST SYSTEM & PROTECTED BY PATENTS. ALL COPYRIGHT ARE RESERVED. (U.S. 6,829,870 B2) & (MY-124213-A)

MANUFACTURER

HC MANUFACTURING SDN. BHD. (585570-T)
 No.23-1, Jalan Seri Sarawak 208/KS2, Taman Seri Andalas,
 41200 Klang, Selangor D.E.
 Tel:03-3323 7999 Fax:03-3323 8993

DRAWN :	HC
DATE :	AUG 2018
CHECKED :	2083
EXAMPT :	2083
APPROD :	2083
SCALE :	NTS

**Mock up panel for
Reputable Company
from Japan**

DRAWING TITLE :	
PROPOSAL 1 TOTAL CONCRETE VOLUME	
DRAWING NO :	HC/PNH/P1/04
SYSTEM :	—
REV :	—

12th & 13th August 2018 : - Ground floor slab



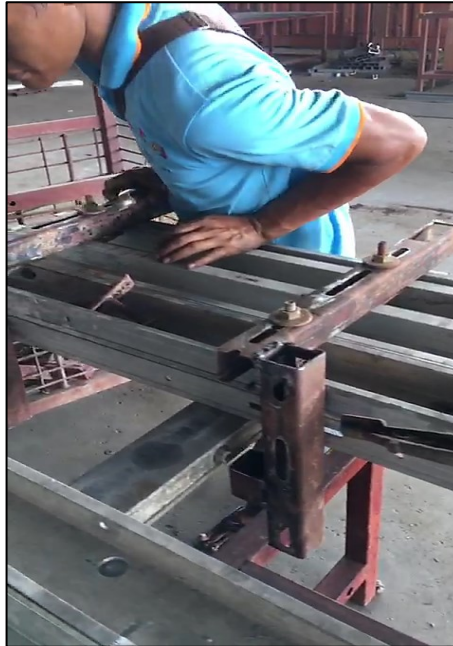
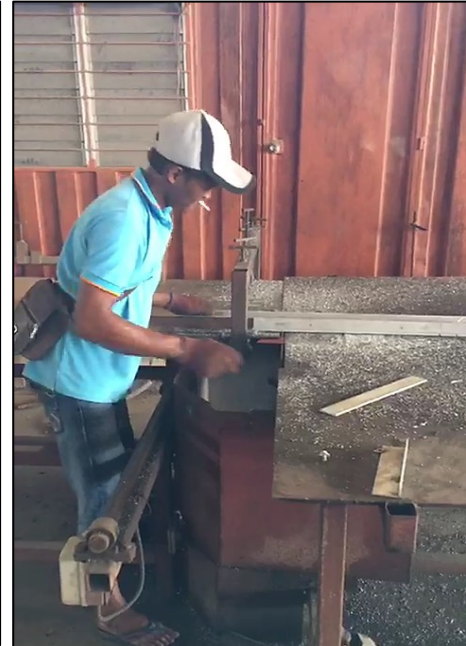
12th & 13th August 2018 : - One Stop Solution In-house Engineering Department



12th & 13th August 2018 : - One Stop Solution In-house Engineering Department



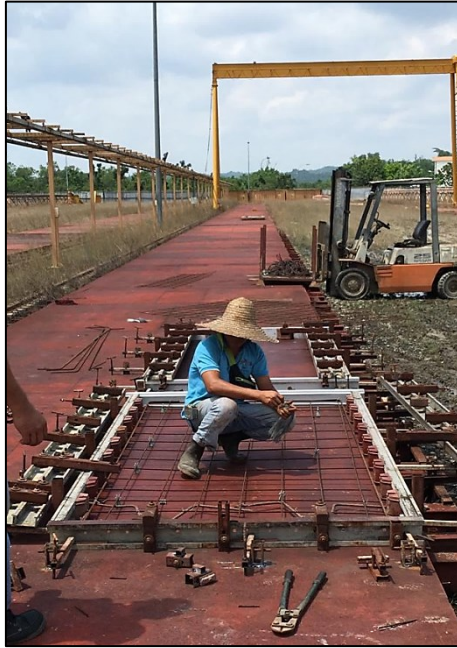
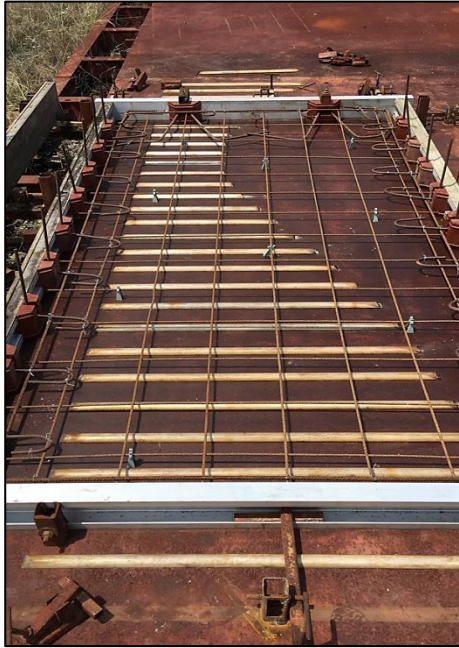
12th & 13th August 2018 : - One Stop Solution In-house Engineering Department



12th & 13th August 2018 : - One Stop Solution In-house Engineering Department



12th & 13th August 2018 : - One Stop Solution In-house Engineering



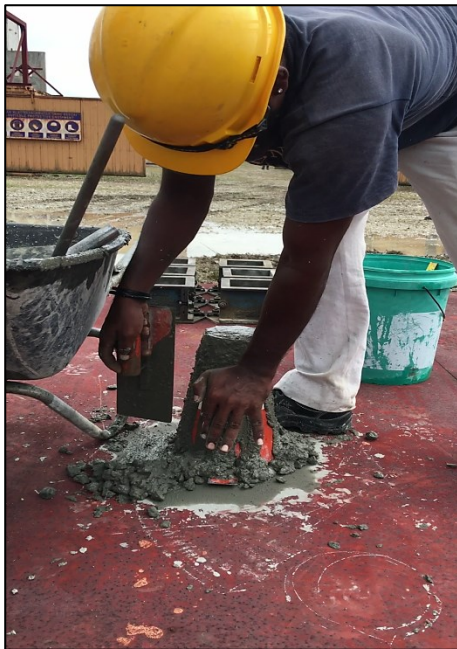
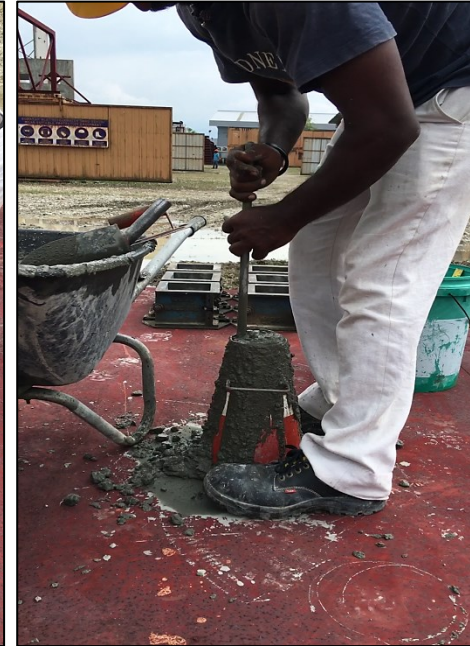
Training unit 12 years without any covering & waterproofing



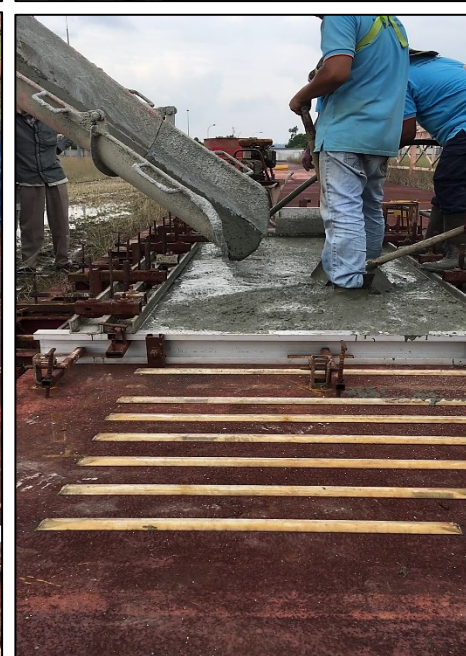
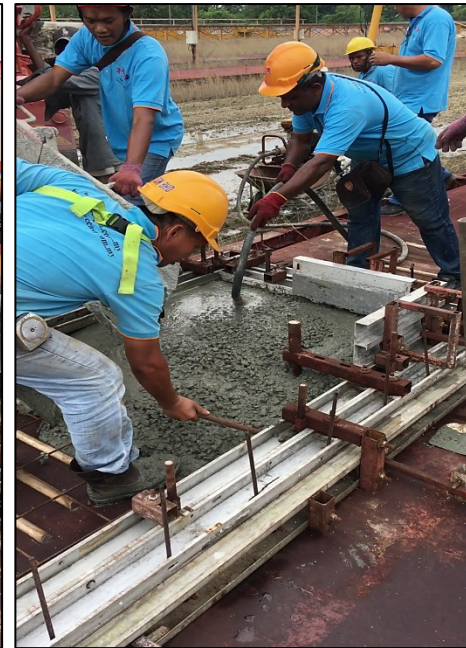
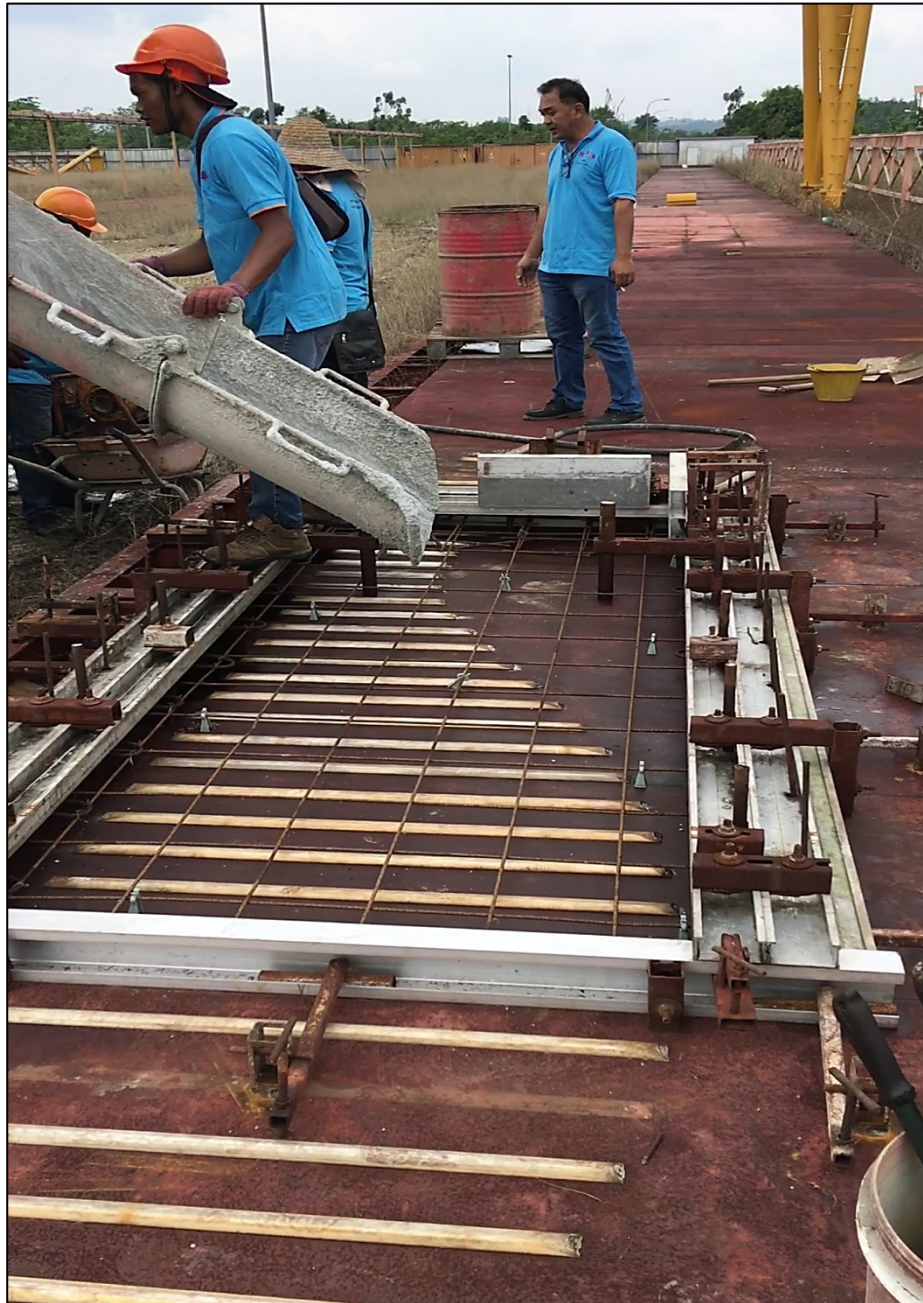
12th & 13th August 2018 : - One Stop Solution In-house Engineering



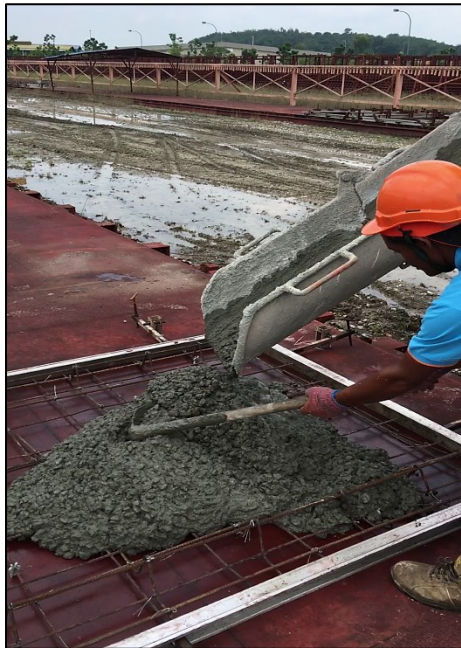
12th & 13th August 2018 : - Mock up panel slum test before casting



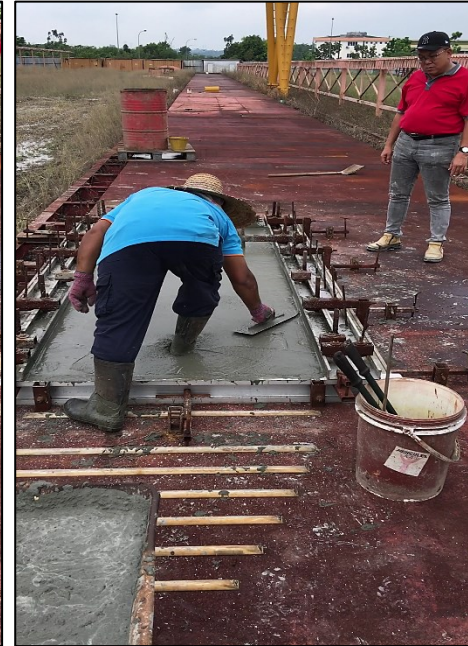
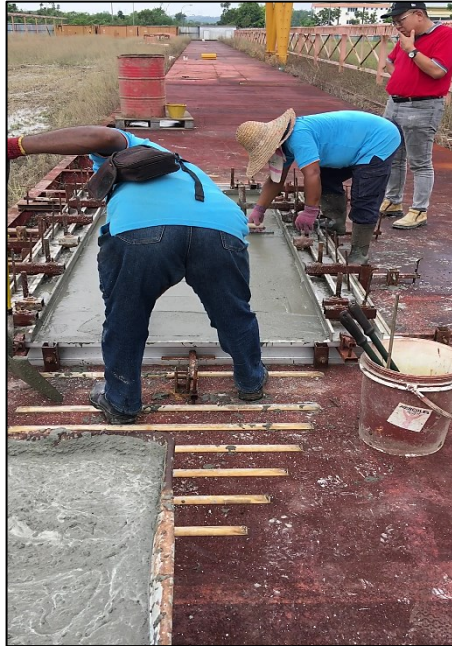
12th & 13th August 2018 : - Mock up panel casting



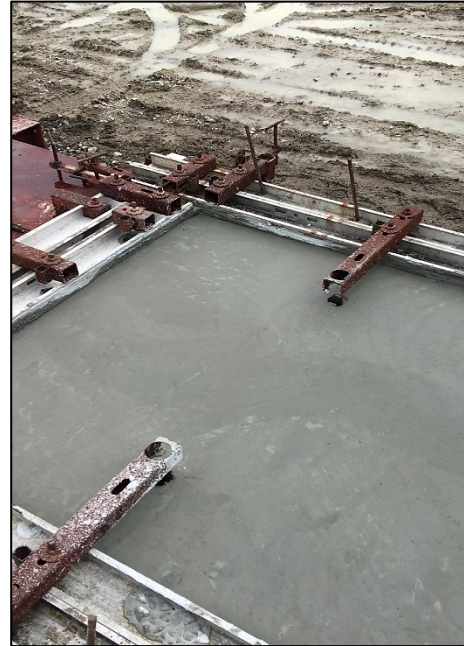
12th & 13th August 2018 : - Mock up panel casting



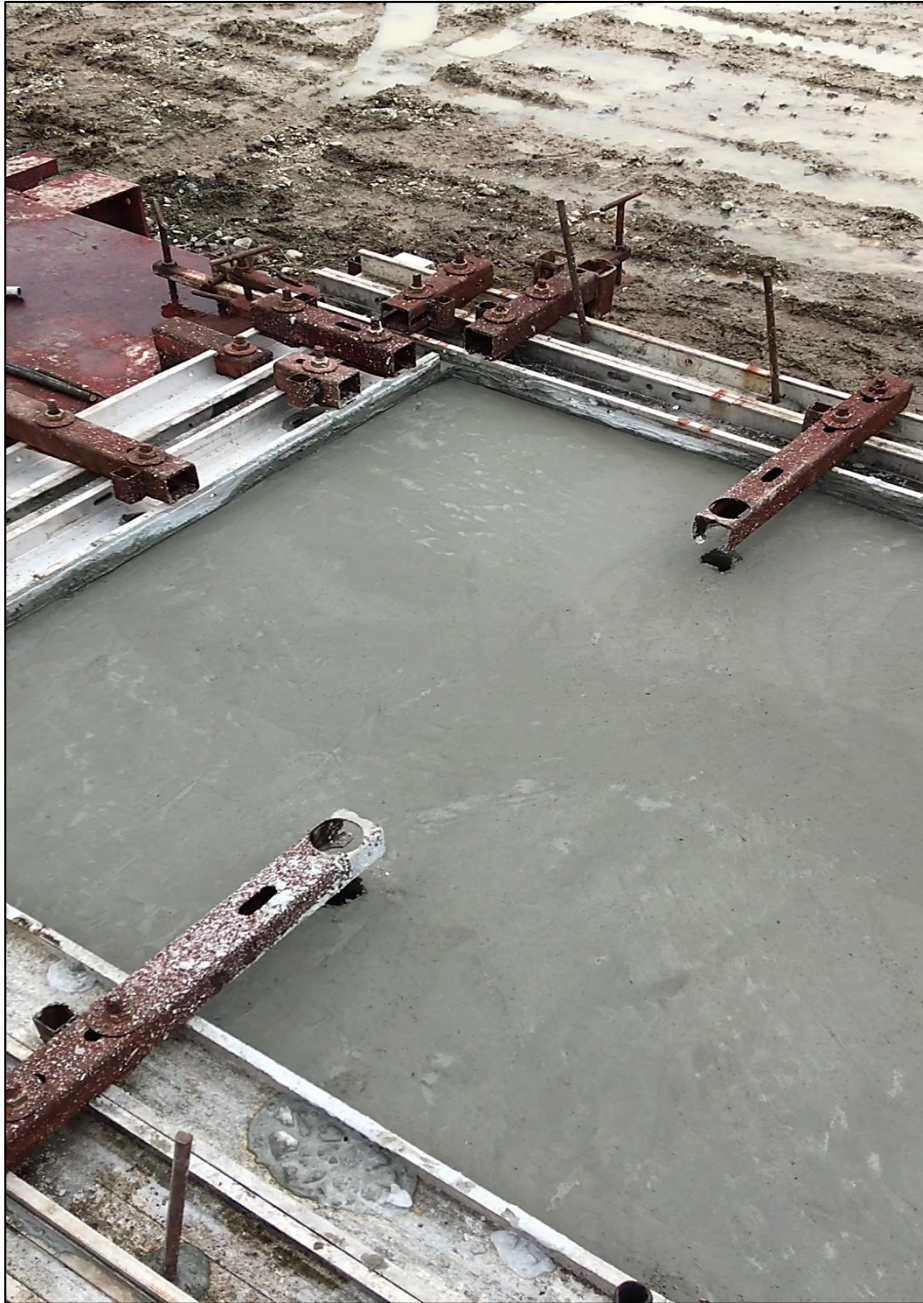
12th & 13th August 2018 : - Smooth surface



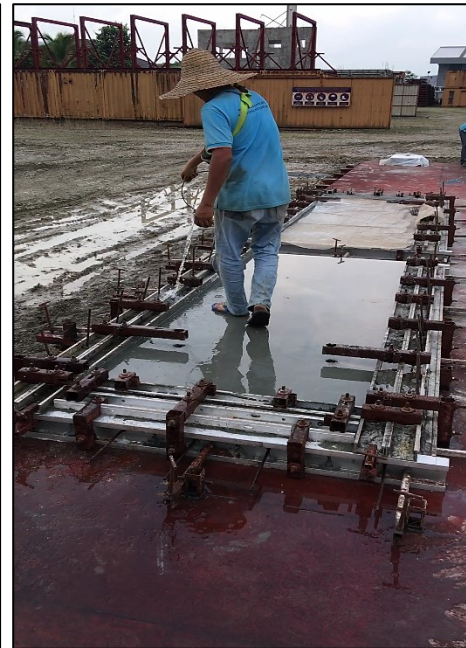
12th & 13th August 2018 : - Smooth surface



12th & 13th August 2018 : - Smooth surface



12th & 13th August 2018 : - Curing



12th & 13th August 2018 : - Curing



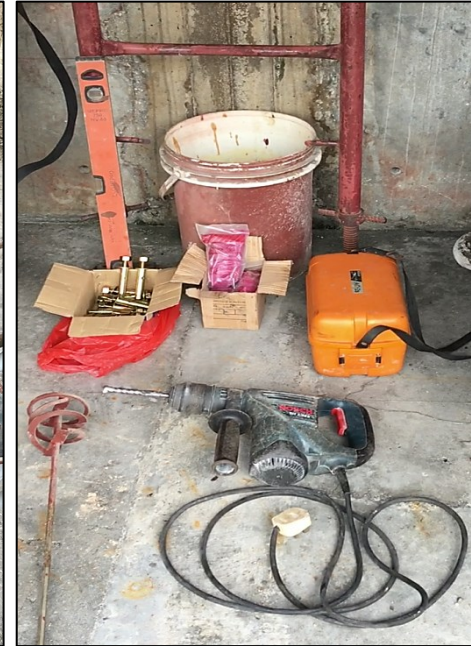
12th & 13th August 2018 : - Logistics (off-site)



12th & 13th August 2018 : - Logistics (off-site)



12th & 13th August 2018 : - Setting-out for panel installation & Tools



12th & 13th August 2018 : - Setting-out for panel installation



12th & 13th August 2018 : - Setting-out for panel installation



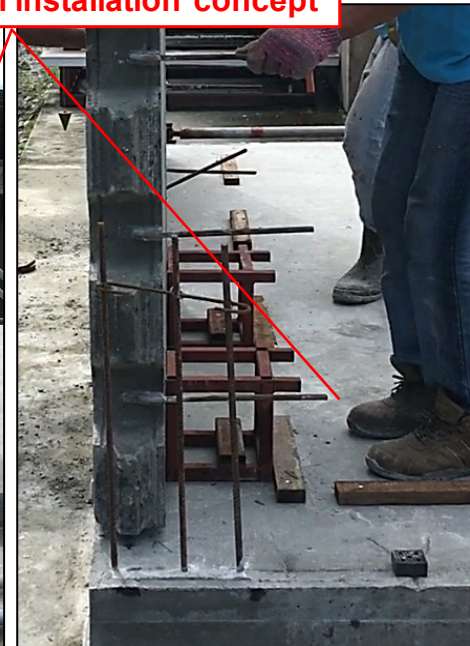
12th & 13th August 2018 : - HCPS Precast Panel Installation Concept



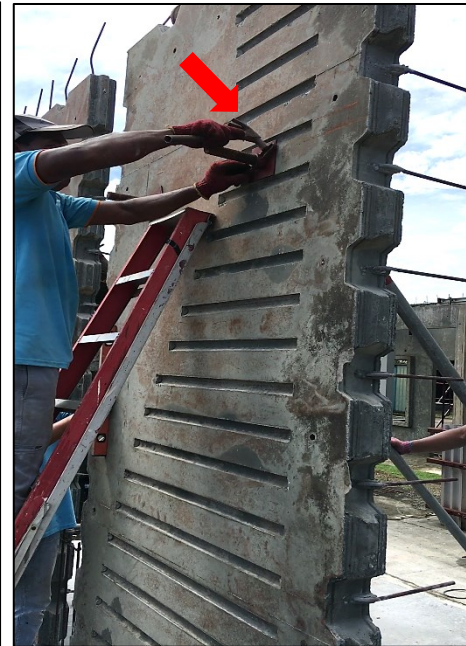
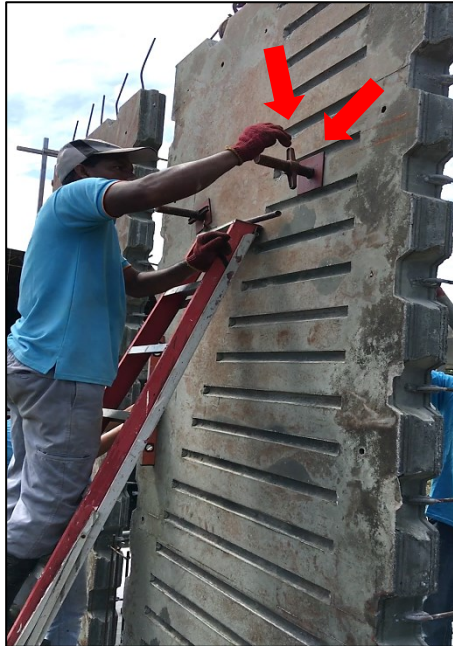
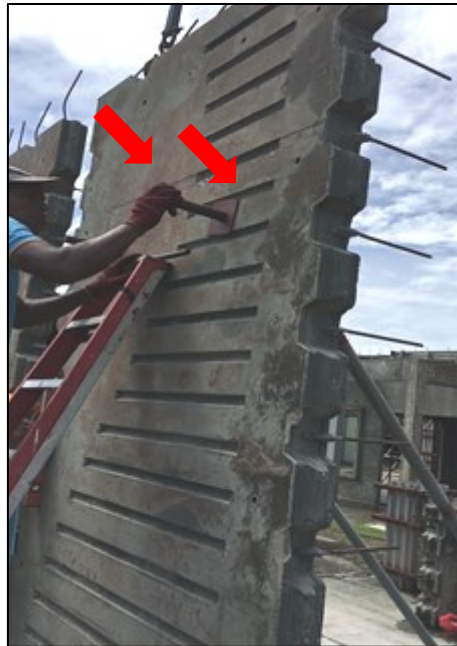
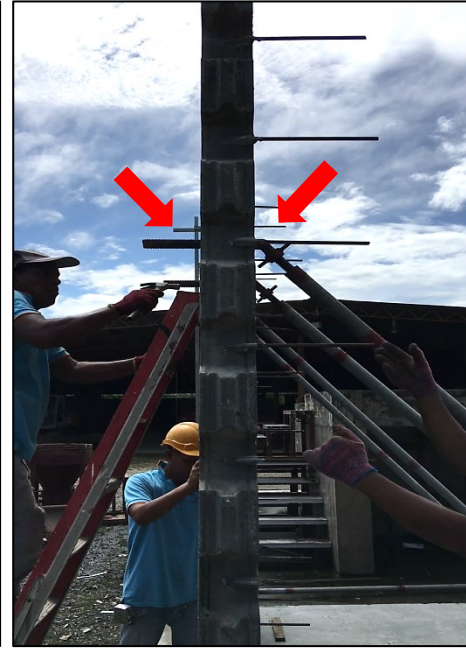
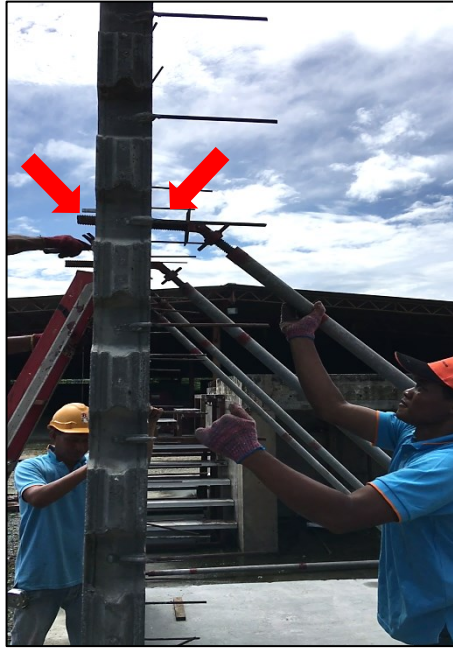
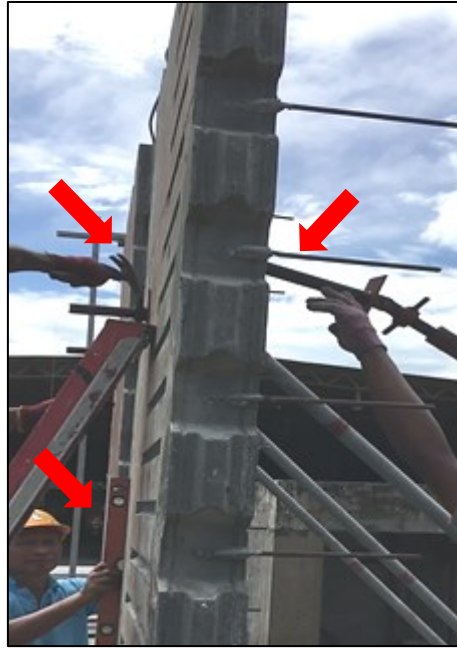
12th & 13th August 2018 : - HCPS Precast Panel Installation Concept



HCPS precast panel installation concept



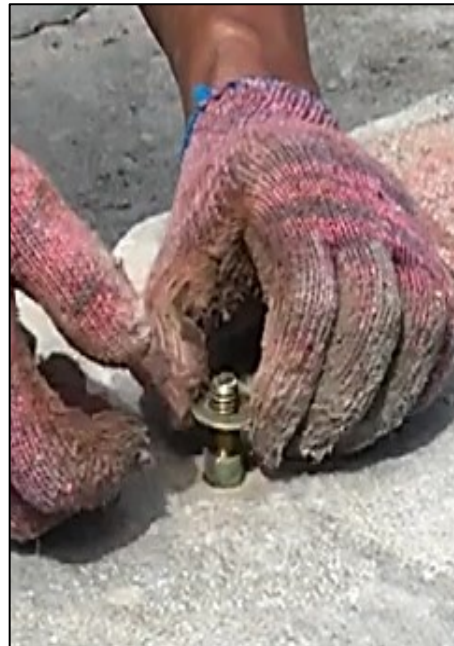
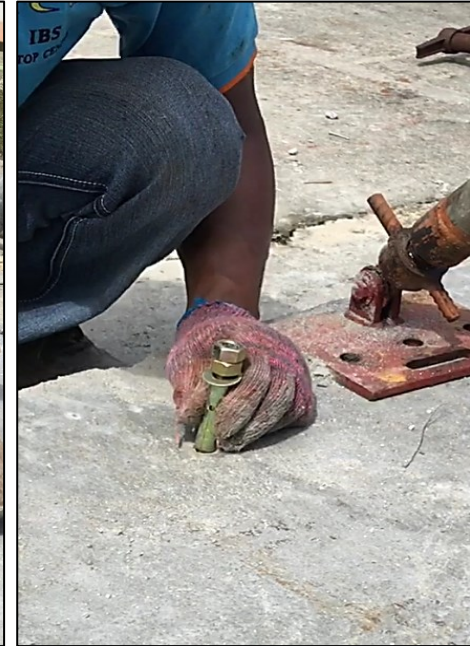
12th & 13th August 2018 : - HCPS Precast Panel Installation Concept



12th & 13th August 2018 : - HCPS Precast Panel Installation Concept



12th & 13th August 2018 : - HCPS Precast Panel Installation Concept



12th & 13th August 2018 : - HCPS Precast Panel Installation Concept



12th & 13th August 2018 : - HCPS Precast Panel Installation Concept



12th & 13th August 2018 : - HCPS Precast Panel Installation Concept



12th & 13th August 2018 : - HCPS Precast Panel Installation Concept





12th & 13th August 2018 : - Mock up panel wet joint ready for casting (on-site)



12th & 13th August 2018 : - Mock up panel wet joint ready for casting (on-site)



12th & 13th August 2018 : - Mock up panel wet joint ready for casting (on-site)



12th & 13th August 2018 : - Mock up panel wet joint ready for casting (on-site)



12th & 13th August 2018 : - Mock up panel wet joint ready for casting (on-site)



12th & 13th August 2018 : - Mock up panel Verticality checking before casting (on-site)



12th & 13th August 2018 : - Mock up panel wet joint slum test before casting (on-site)



12th & 13th August 2018 : - Mock up panel wet joint casting (on-site)



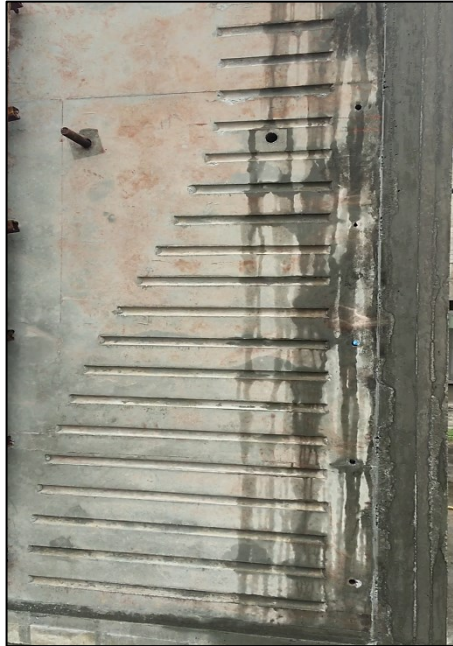
12th & 13th August 2018 : - Mock up panel wet joint casting (on-site)



12th & 13th August 2018 : - Mock up panel wet joint mould dismantle (on-site)

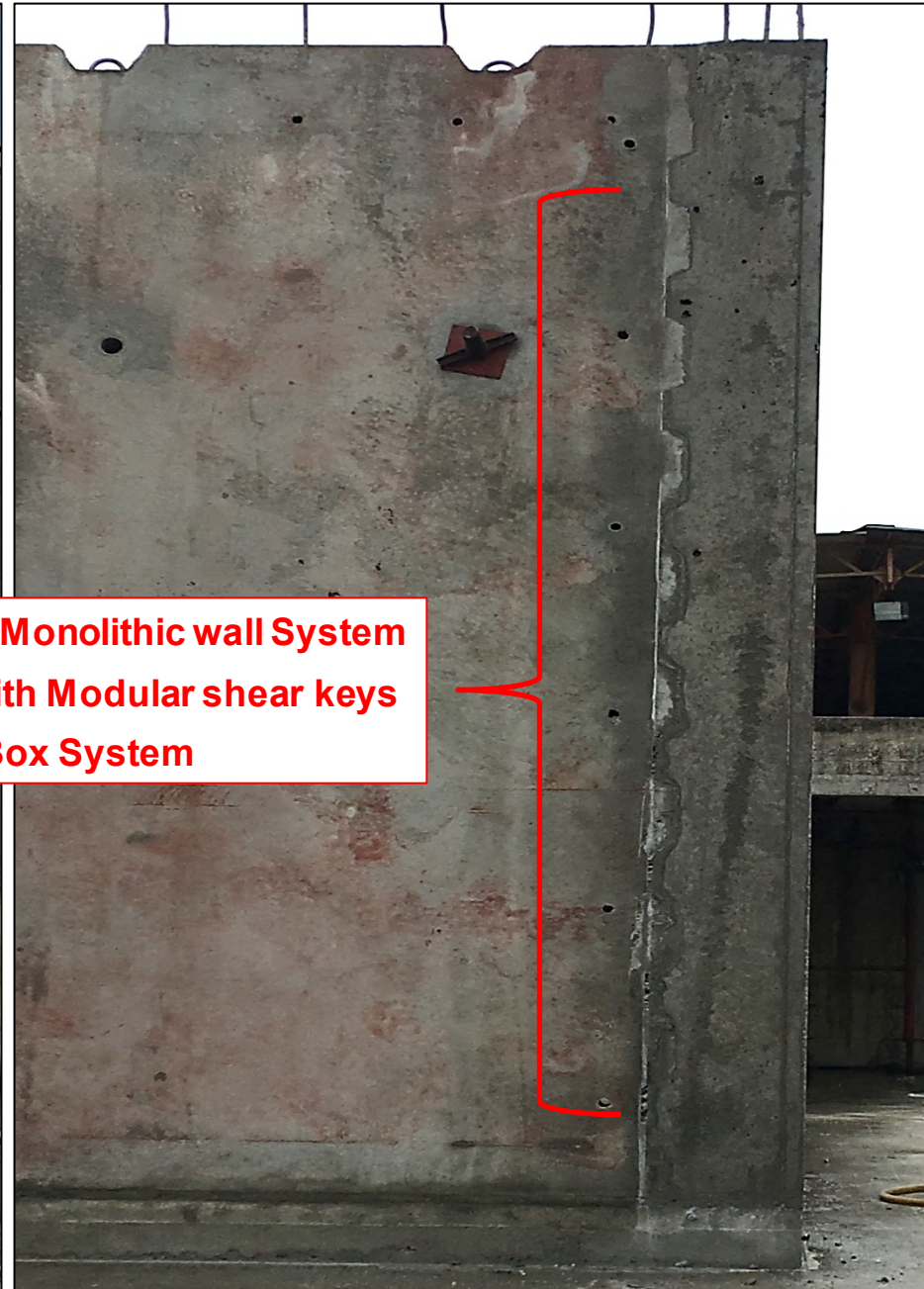


12th & 13th August 2018 : - Mock up panel wall prop dismantle (on-site)





- Loadbearing Monolithic wall System
- Wet joints with Modular shear keys
- Box System



12th & 13th August 2018 : - Mock up panel wall prop dismantle (on-site)



12th & 13th August 2018 : - Wet Joints with Modular Shear Keys



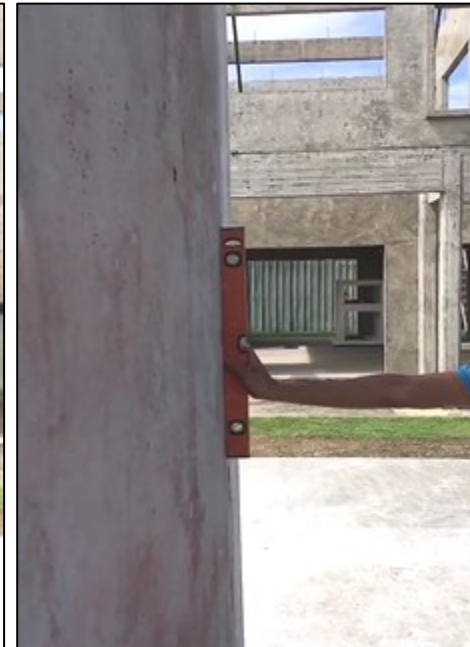
12th & 13th August 2018 : - Grinding uneven surface (if any)



12th & 13th August 2018 : - Mock up panel Verticality (on-site)



12th & 13th August 2018 : - Mock up panel Verticality (on-site)



12th & 13th August 2018 : - HCPS half-slab Installation Concept



12th & 13th August 2018 : - Mock up panel for Reputable Company from Japan





THANK YOU

