

**WELCOME**  
**SCADRI**  
**( POWER CHINA / PROJECT )**  
**Visit**  
**HC PRECAST Factory**  
**IBS Superstructure In Malaysia 3 in 1**  
**- 26-4-2017 -**

**Industrialised Building System ( IBS )**  
**is a system not a machine or component.**

**Open System and Proprietary System**  
**is a Technology.**

**Factory Location :**

<https://www.google.com/maps/place/HC+Precast/@3.5023546,101.6234678,21z/data=!4m5!3m4!1s0x0:0x83b5d2a1afa0368b!8m2!3d3.502373!4d101.623476>

## Presentation In Rasa Factory Show unit





## IBS Superstructure In Malaysia 3 In 1 – Load Bearing Wall System, Modular Shear Keys (Wet Joint) & Box System



## Question & Answer : Load Bearing Wall

- 1





## Question & Answer : Load Bearing Wall

- 2



# Training Unit ( Without Waterproofing , Roof Covering & Finishing – 9 Years)

- 1





## Training Unit ( Without Waterproofing , Roof Covering & Finishing – 9 Years)

- 2







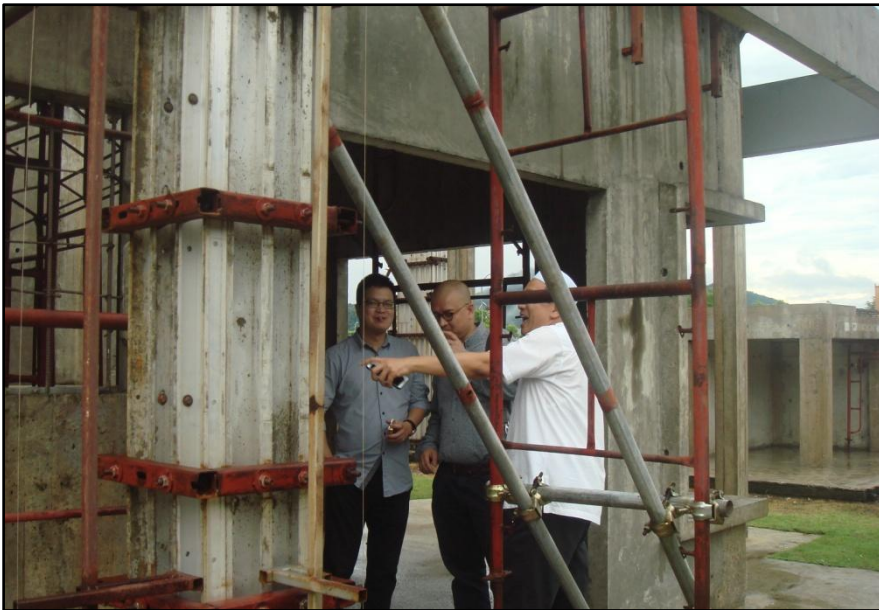


## Modular Shear Keys with Wet Joint





## Modular Shear Keys with Wet Joint





## In-house Engineering & Accessories Fabrication





## Precast Staircase Mould Installation & Dismantle Demo : 5 Minutes





## **SPEED : Decide by Client : Production , Delivery & Installation**



**Future development 13 acres : 2,500 to 3,500 units  
of single storey ( 1000 ft2 ) per year**

**Existing production 8 acres : 1,800 to 2,500 units  
of single storey ( 1000 ft2 ) per year**



## Quality Control & Assurance



**External transport to project**



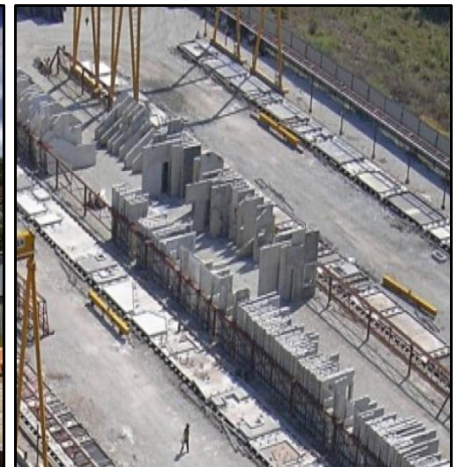
**G30 design mixed 14 hrs hoist**



**Panel 18 hrs hoist**



**Bay yard storage 7 days**





**DESIGN BY YOU**  
**PRODUCE BY HC**  
**THANK YOU**