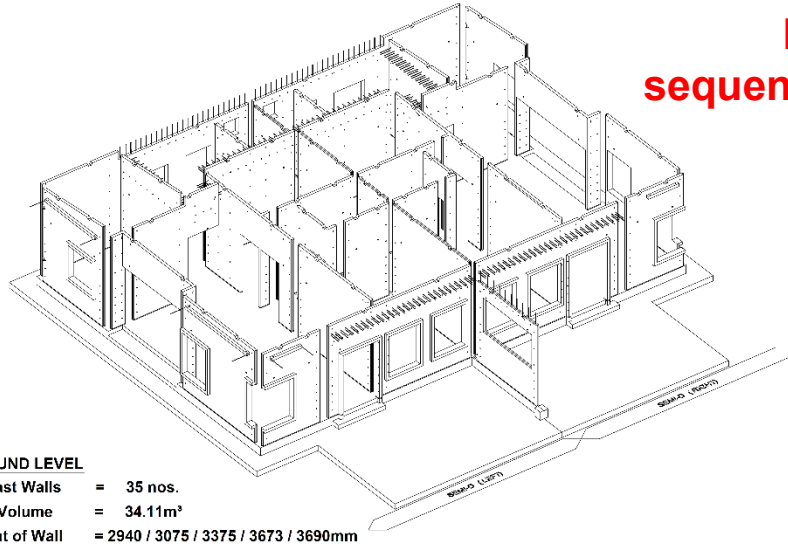


9 DAYS WITH 9 WORKERS (8.00am – 7.00pm)

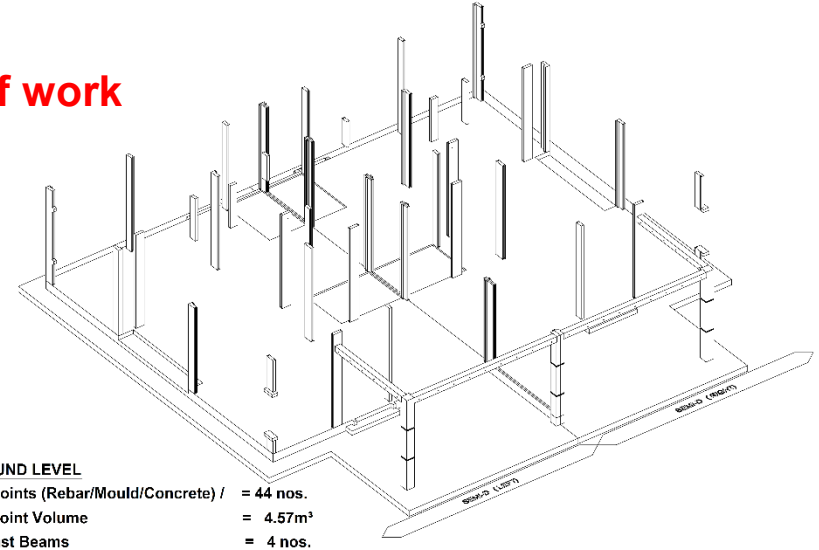
1. Mobilisation (3 days) :
 - a) Site Office Setup
 - b) Precast elements delivery
 - c) Setting-out for panel installation
2. Day 1 of 9 (18/01/2019) : - Grd level precast wall panel installation & Filling of expanding cement
3. Day 2 of 9 (19/01/2019) : - Grd level expanding cement filling, Wet joint rebar, Modular mould installation & Concreting
4. Day 3 of 9 (20/01/2019) : - Grd level wet joint rebar, Modular mould installation
5. Day 4 of 9 (21/01/2019) :
 - Car porch column rebar, Modular mould and Precast beam installation
 - Grd level wet joint & car porch column concreting
6. Day 5 of 9 (22/01/2019) :
 - Grd level wet joint modular mould dismantle
 - Precast half slab & In-situ modular mould installation for RC flat roof at water tank area
7. Day 6 of 9 (23/01/2019) :
 - Grd level wet joint modular mould dismantle
 - Precast half slab & In-situ modular mould installation for RC flat roof at car porch
 - Roof level precast wall panel installation
8. Day 7 of 9 (24/01/2019) :
 - Grd level wet joint modular mould dismantle
 - Car porch coping modular mould, In-situ slab rebar & BRC installation
 - Roof level precast wall panel installation
 - Roof level wet joint rebar installation
9. Day 8 of 9 (25/01/2019) : - Roof level wet joint rebar & Modular mould installation
10. Day 9 of 9 (26/01/2019) : **LAST DAY**
 - Roof level wet joint concreting
 - Car porch in-situ flat roof concreting
 - All support / prop to beam will be dismantle after 14 days (09/02/2019) as comply to BSI code

IBS sequence of work



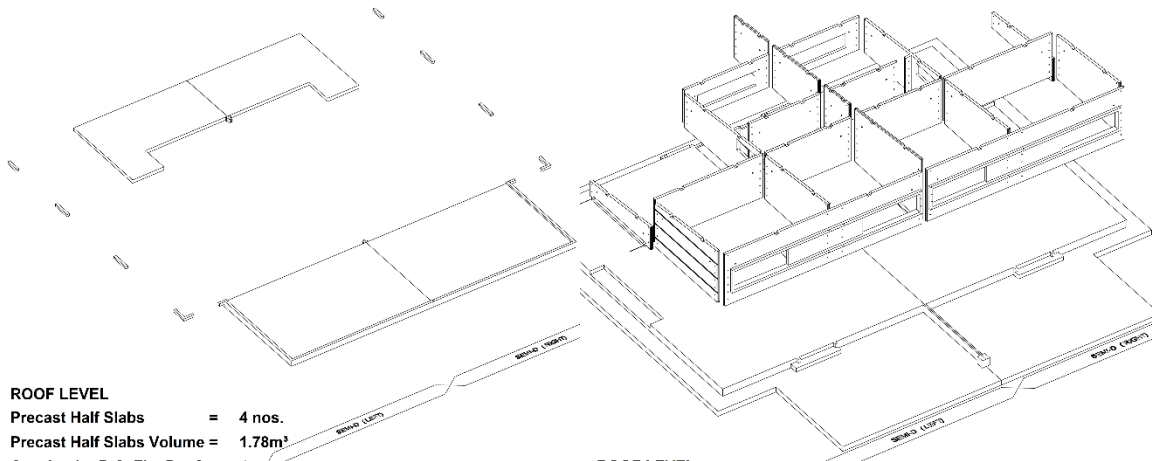
GROUND LEVEL

Precast Walls	= 35 nos.
Wall Volume	= 34.11m ³
Height of Wall	= 2940 / 3075 / 3375 / 3673 / 3690mm
Built-up Area	= 186.74m ²



GROUND LEVEL

Wet Joints (Rebar/Mould/Concrete) /	= 44 nos.
Wet Joint Volume	= 4.57m ³
Precast Beams	= 4 nos.
Precast Beams Volume	= 0.71m ³

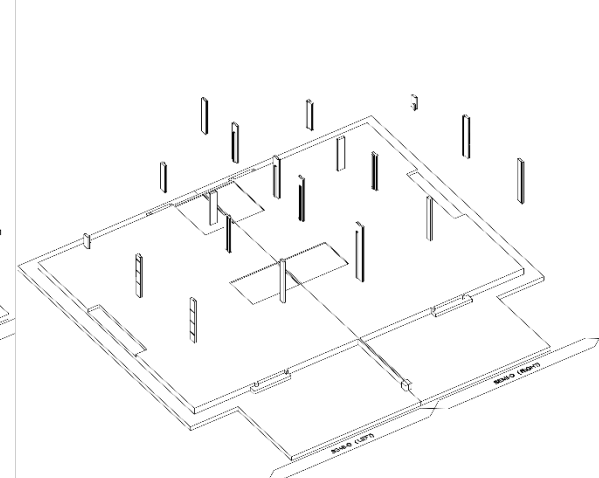


ROOF LEVEL

Precast Half Slabs	= 4 nos.
Precast Half Slabs Volume	= 1.78m ³
Cast in-situ R.C. Flat Roofs	= 4 nos.
Cast in-situ R.C. Flat Roofs Volume	= 12.06m ³
Cast in-situ Copings	= 10 nos.
Cast in-situ Copings Volume	= 0.07m ³

ROOF LEVEL

Precast Walls	= 22 nos.
Precast Walls Volume	= 14.42m ³
Height of Wall	= 614~2522mm



ROOF LEVEL

Wet Joints (Rebar/Mould/Concrete) = 19 nos.
Wet Joints Volume = 1.19m ³

SYSTEM PROVIDER



HC PRECAST SYSTEM SDN. BHD. (586697-M)
No.231, Jalan Seri Sarawak 203/KS2, Taman Seri Andalas,
11200 Tanjung, Sebangau D.E. Tel:03-3323 7999 Fax:03-3323 8993
e-mail:hcprecast@protonmail.com.my, hlpow@increast.com.my

DETAILS SHOWN IN THIS DRAWING ARE PROPERTY OF HC PRECAST SYSTEM & PROTECTED BY PATENTS. ALL COPYRIGHTS ARE RESERVED. (U.S. PAT.8,722,392 & (M-124743-A)

MANUFACTURER

HC MANUFACTURING SDN. BHD. (585570-M)
No.23-1, Jalan Seri Sarawak 203/KS2, Taman Seri Andalas,
41700 Klang, Selangor D.E. Tel:03-3323 7999 Fax:03-3323 8993

DESIGN :	NO
DATE :	NOV 2018
DRAWN :	MEMO
CHECKED :	MEMO
DATE :	MEMO
SCALE :	NTS

CADANGAN SKIM PERUMAHAN RAKYAT 1 MALAYSIA
(PRIMA) BAGI RUMAH BERKEMBAR 1 TINGKAT
DI ATAS TANAH KERAJAAN DI PAMAH KASIH,
CIHARUK PUTING, MUKIM PERAK, DATRAIT TEMERLOH,
PAHANG.
UNTUK TITULAN:
BERGAMO DESIGN (M) SDN. BHD.

DRAWING TITLE:
SINGLE STOREY SEMI-D (LEFT & RIGHT UNIT)
SEQUENCE OF WORKS

DRAWING NO.:	HC/BD/SD/SOW-01	REV.:	C
SYSTEM :	-	REV.:	-

3. Day 2 (19/01/2019) :

- 9 DAYS WITH 9 WORKERS (8.00am - 7.00pm)

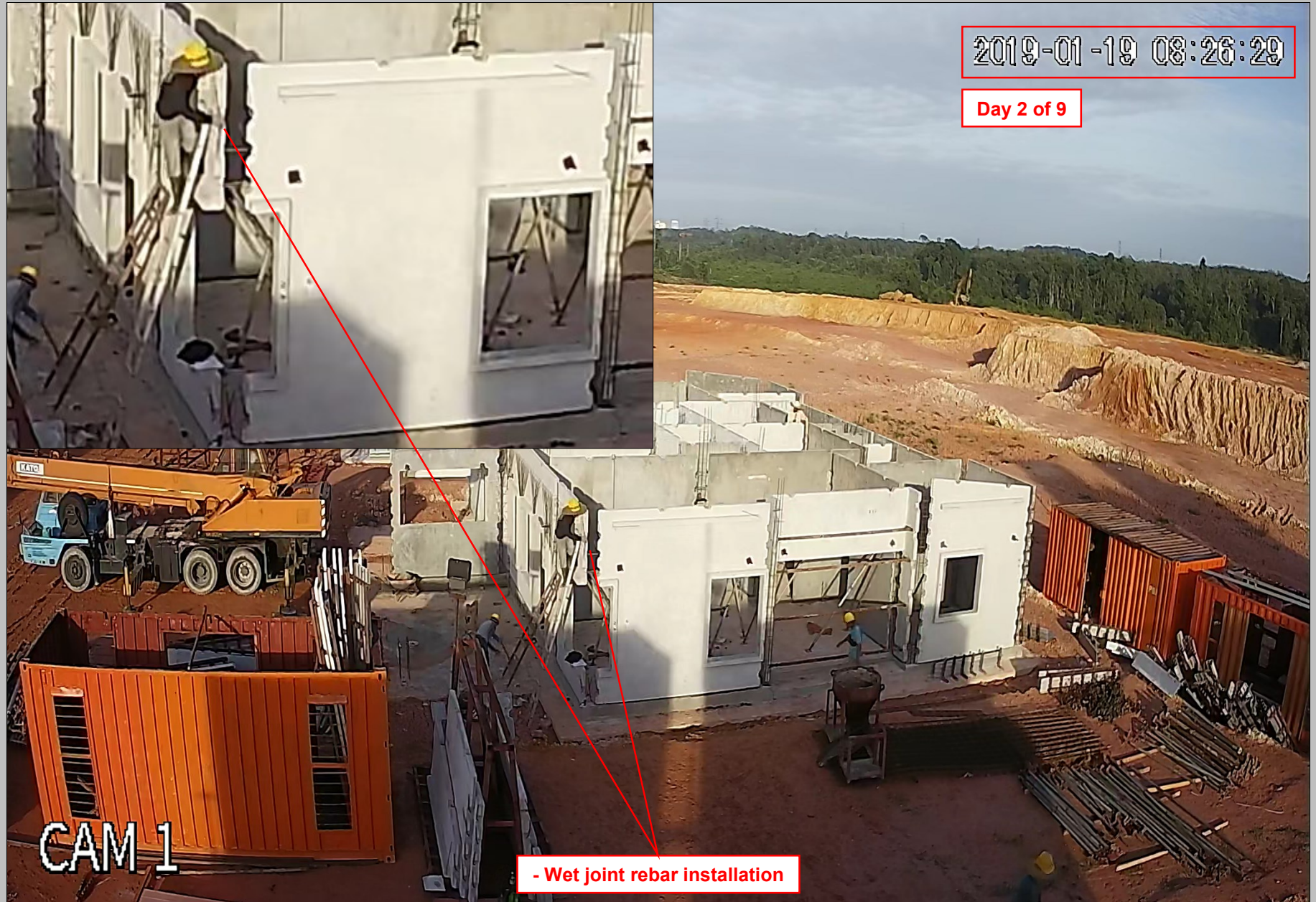
2019-01-19 08:01:23

Day 2 of 9

- Grd level expanding cement filling
- Grd level wet joint rebar installation
- Grd level modular mould installation
- Grd level wet joint concreting



3. Day 2 (19/01/2019) : - Grd level wet joint rebar installation



3. Day 2 (19/01/2019) : - Grd level wet joint modular mould

2019-01-19 08:39:36

Day 2 of 9



CAM 1

- Modular wet joint mould

3. Day 2 (19/01/2019) : - Grd level expanding cement filling



FOSROC : Cebex 100
Plasticized Expanding Grout Admixture
- Filling of expanding cement



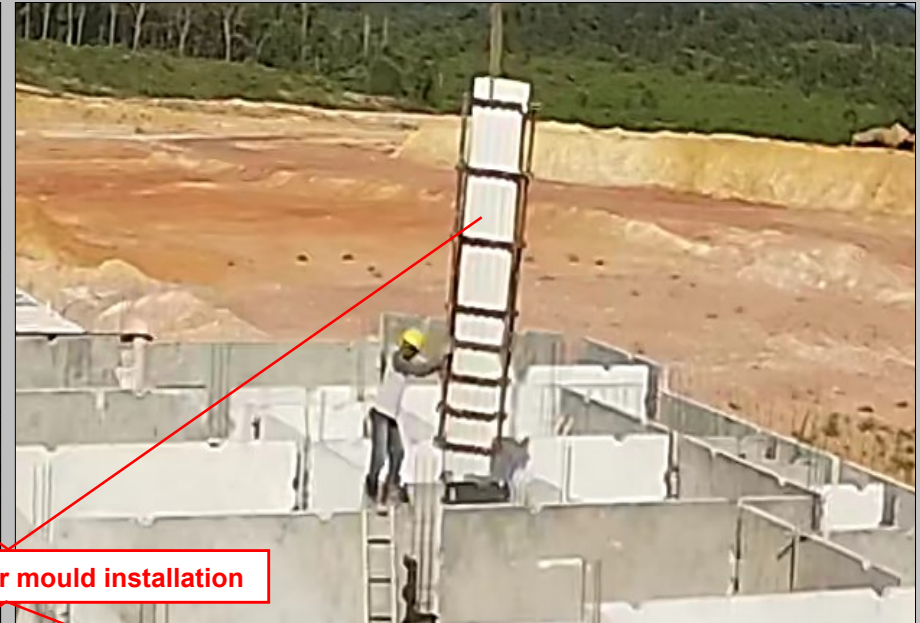
3. Day 2 (19/01/2019) : - Grd level wet joint rebar & Expanding cement filling



3. Day 2 (19/01/2019) : - Grd level wet joint modular mould installation



- Wet joint modular mould installation



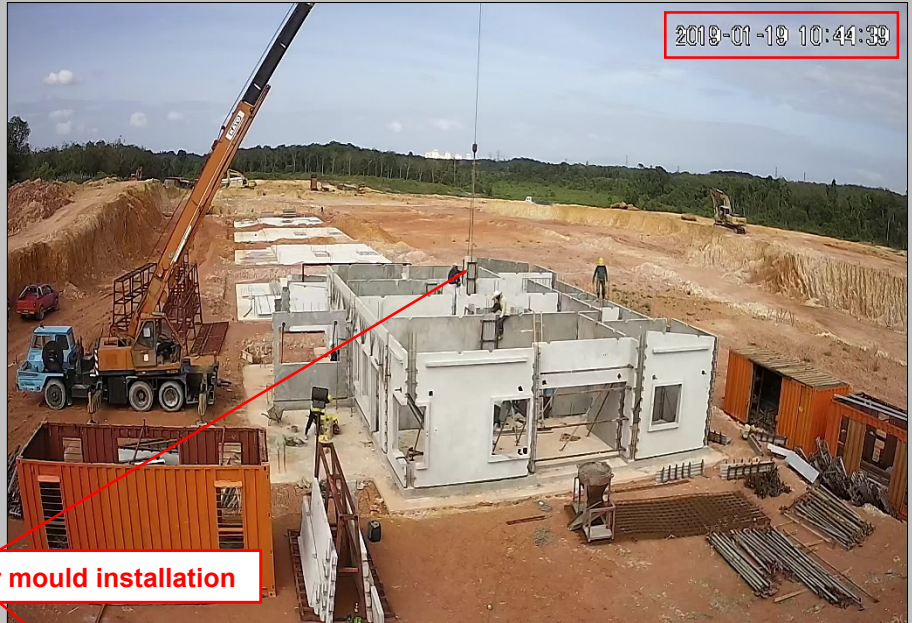
3. Day 2 (19/01/2019) : - Grd level wet joint modular mould installation



3. Day 2 (19/01/2019) : - Grd level wet joint modular installation



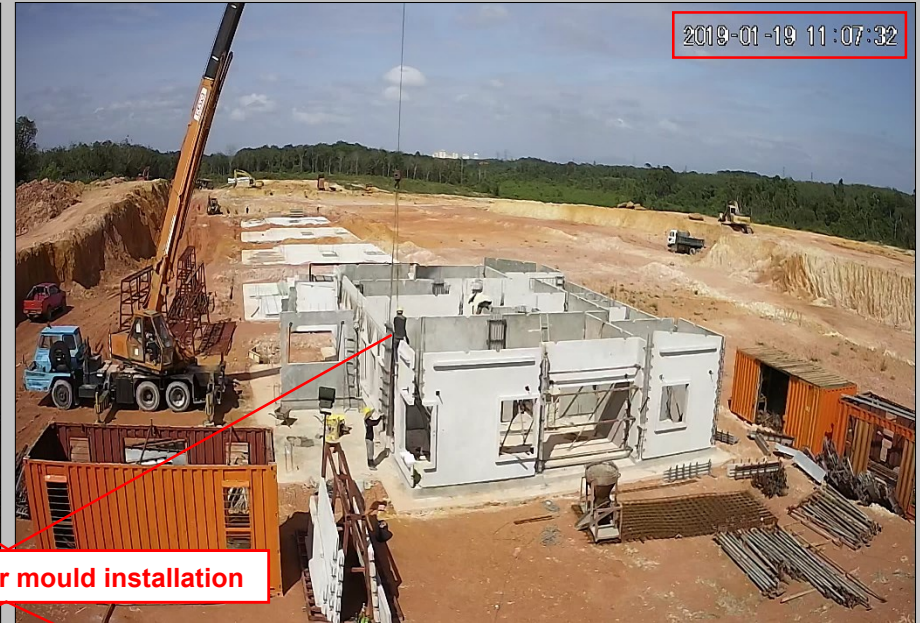
3. Day 2 (19/01/2019) : - Grd level wet joint modular mould installation



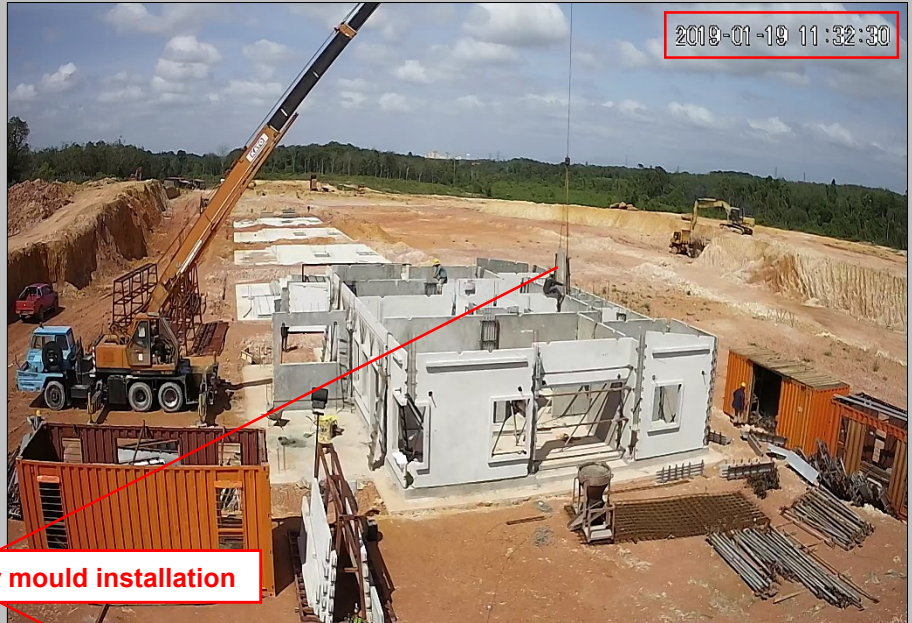
- Wet joint modular mould installation



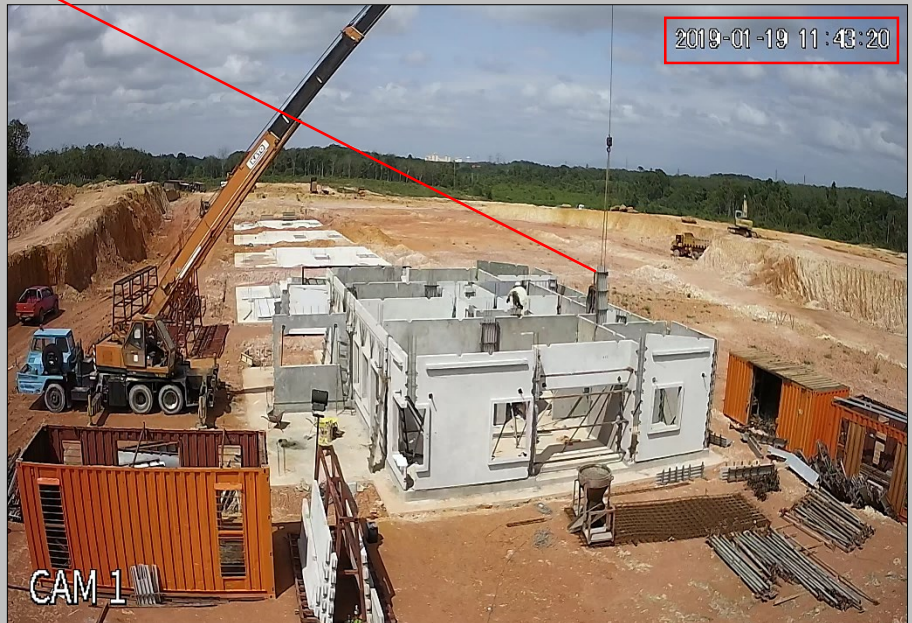
3. Day 2 (19/01/2019) : - Grd level wet joint modular mould installation



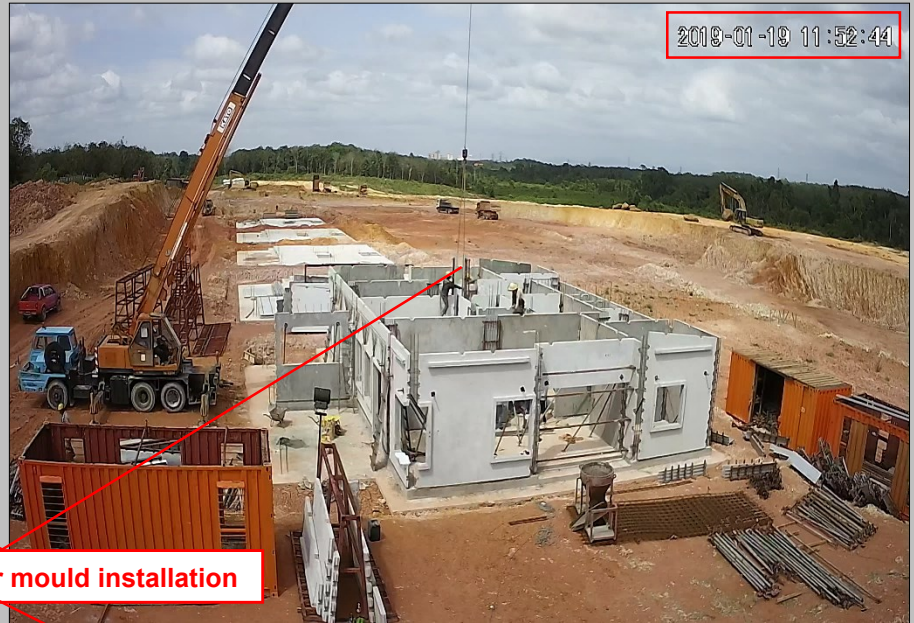
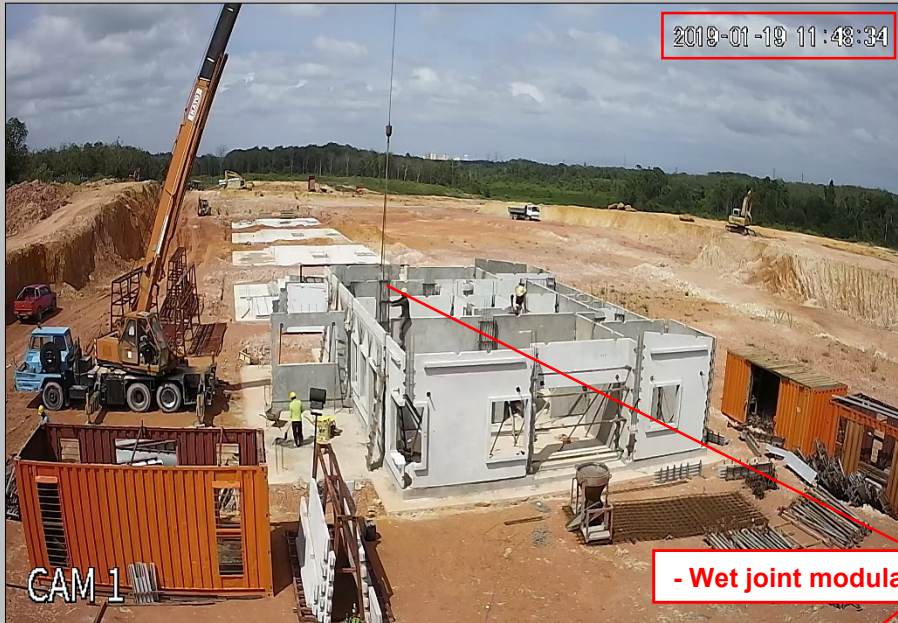
3. Day 2 (19/01/2019) : - Grd level wet joint modular mould installation



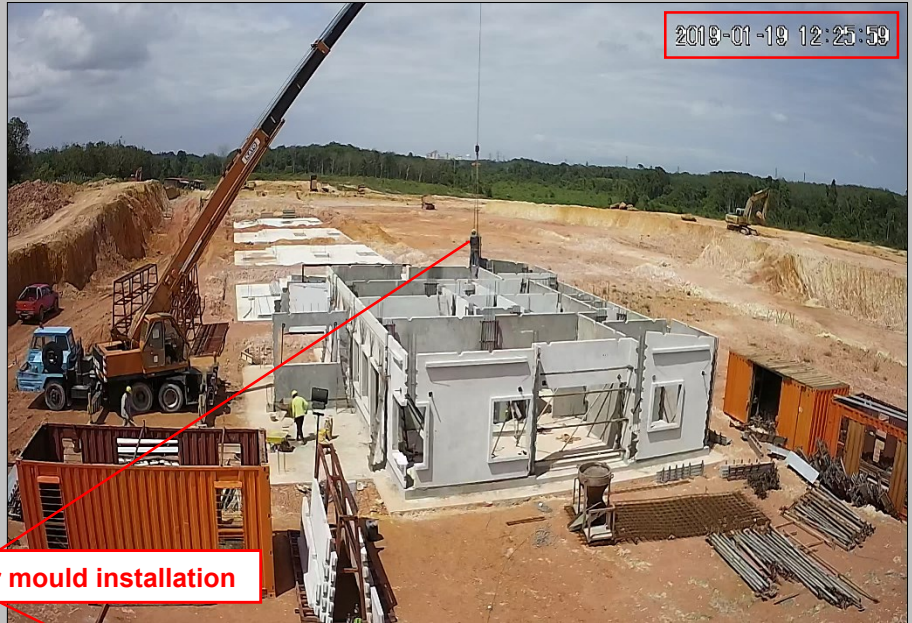
- Wet joint modular mould installation



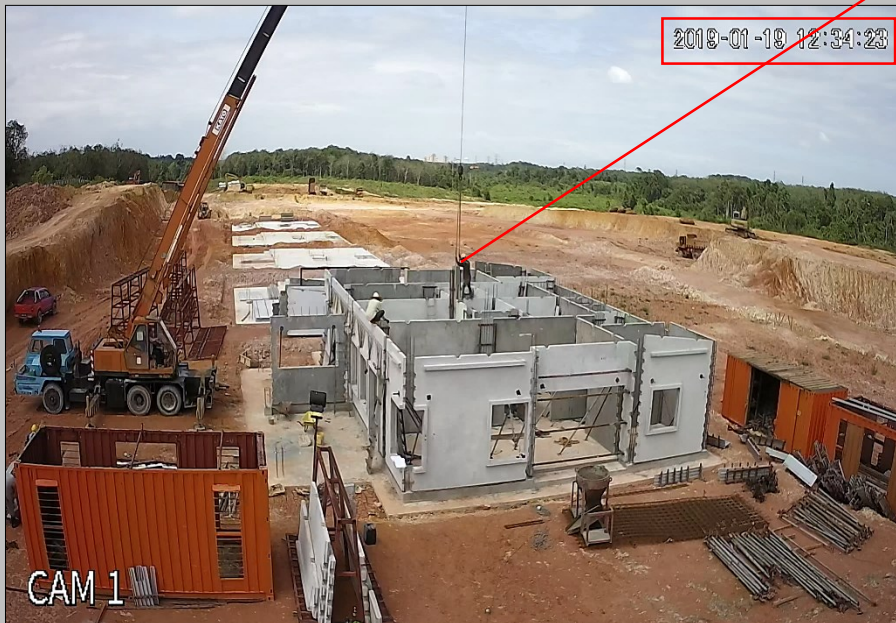
3. Day 2 (19/01/2019) : - Grd level wet joint modular mould installation



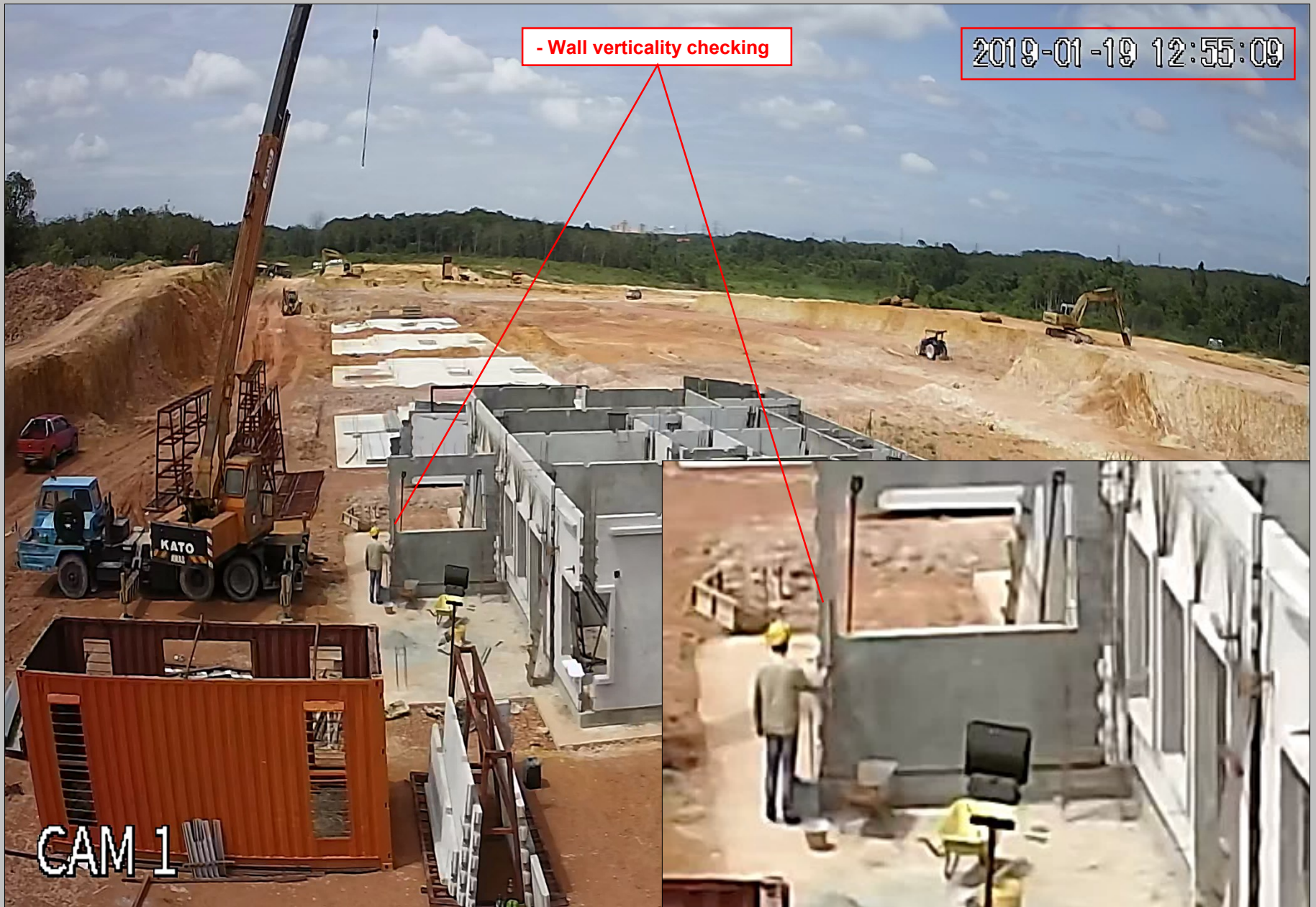
3. Day 2 (19/01/2019) : - Grd level wet joint modular mould installation



- Wet joint modular mould installation



3. Day 2 (19/01/2019) : - Grd level wall verticality checking



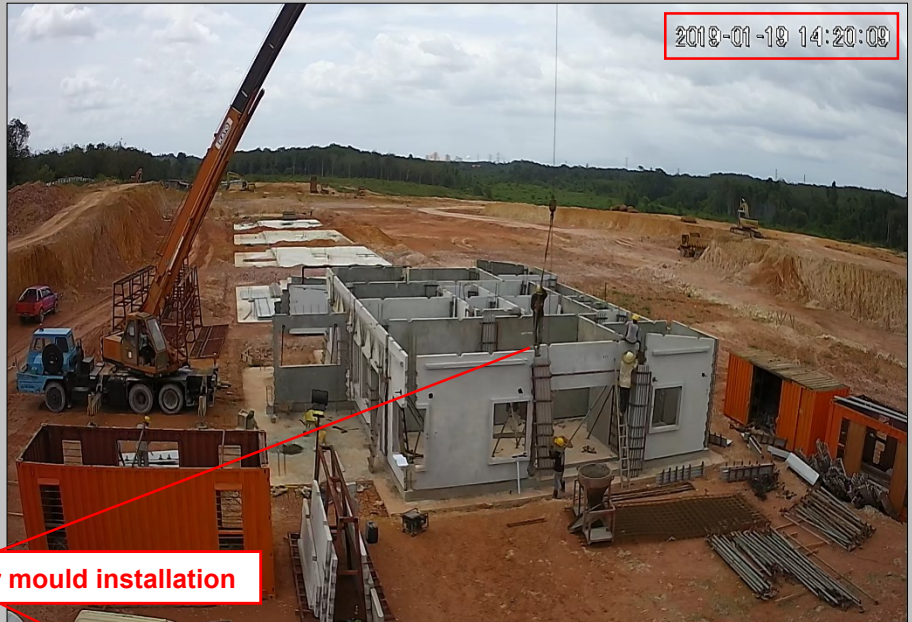
3. Day 2 (19/01/2019) : - Grd level wet joint modular installation



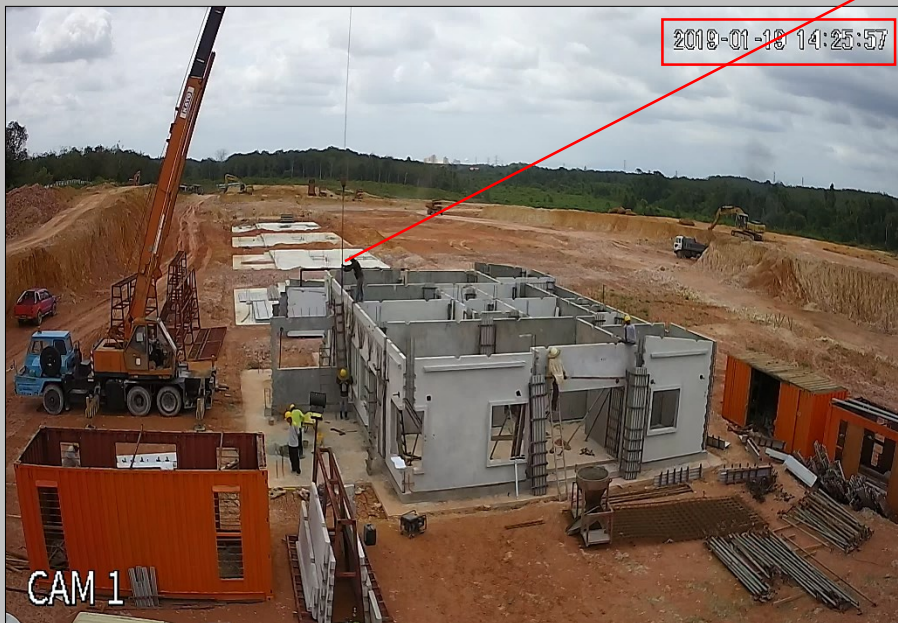
- Wet joint modular mould installation



3. Day 2 (19/01/2019) : - Grd level wet joint modular mould installation



- Wet joint modular mould installation



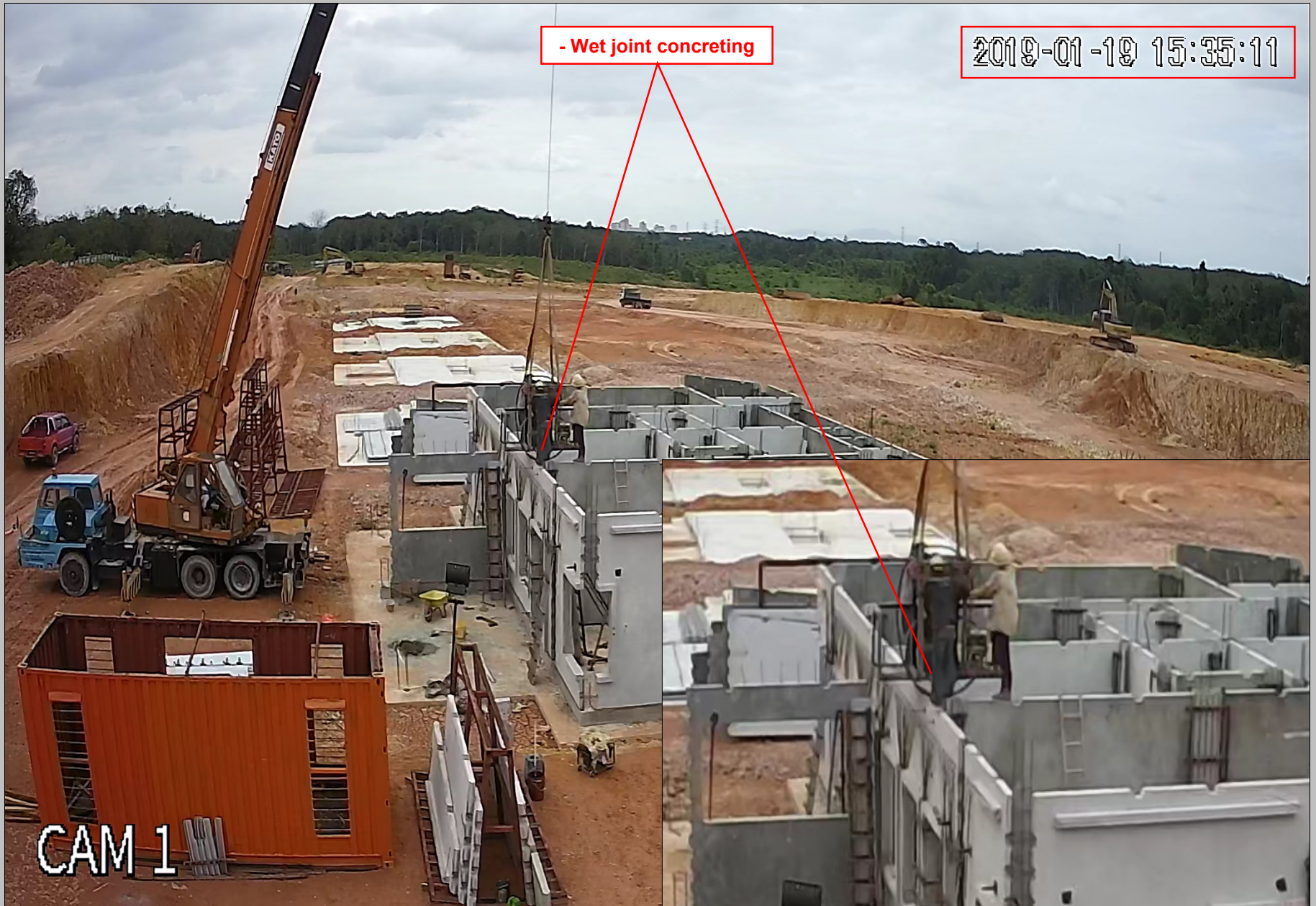
3. Day 2 (19/01/2019) : - Grd level wet joint modular installation



- Wet joint modular mould installation



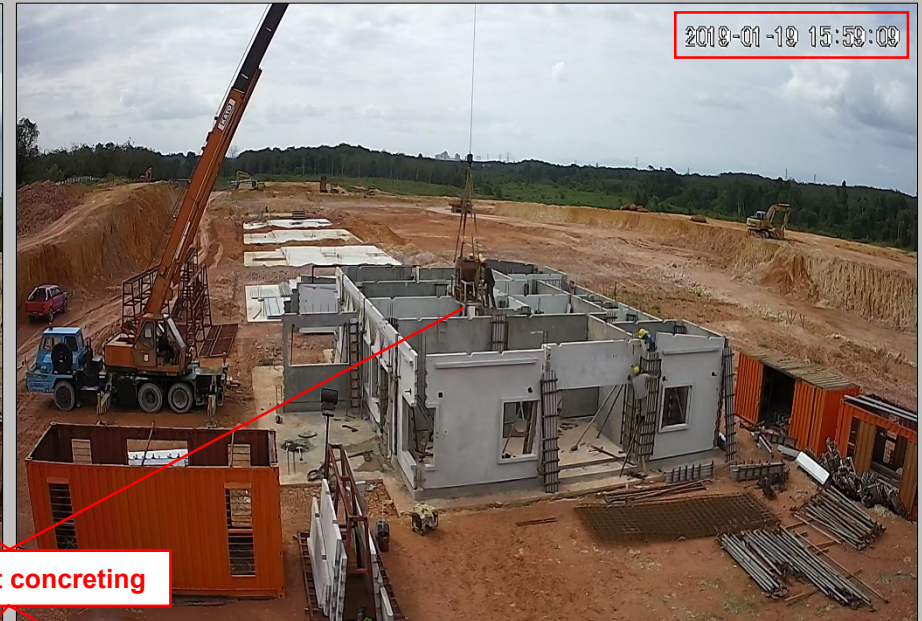
3. Day 2 (19/01/2019) : - Grd level wet joint concreting



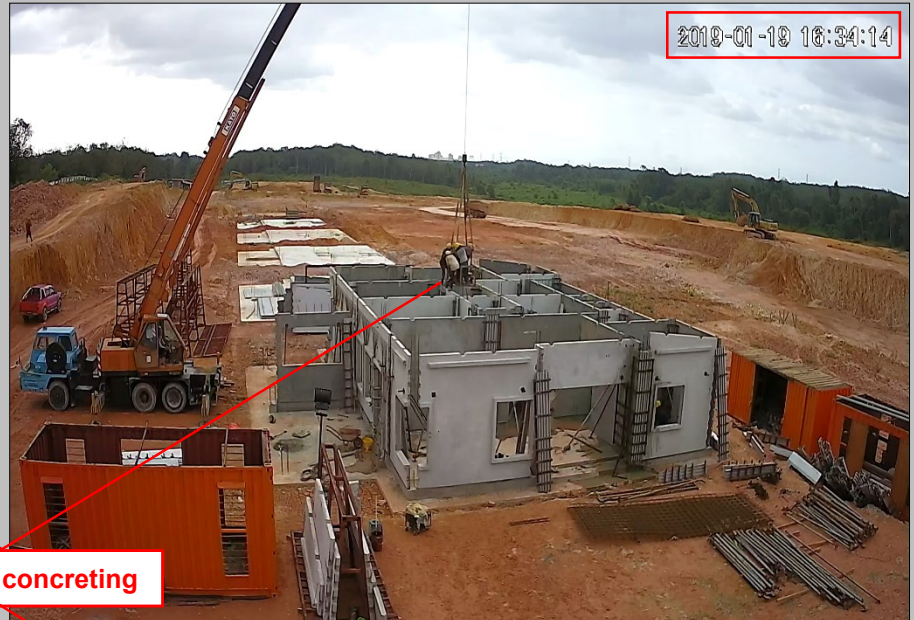
3. Day 2 (19/01/2019) : - Grd level wet joint concreting



3. Day 2 (19/01/2019) : - Grd level wet joint concreting



3. Day 2 (19/01/2019) : - Grd level wet joint concreting



- Wet joint concreting



3. Day 2 (19/01/2019) : - Grd level wet joint concreting & Modular mould installation

2019-01-19 16:50:04

Day 2 of 9



CAM 1

- Wet joint concreting
- Wet joint modular mould installation

3. Day 2 (19/01/2019) : - Grd level wet joint concreting



3. Day 2 (19/01/2019) :

- 9 DAYS WITH 9 WORKERS (8.00am - 7.00pm)

2019-01-19 18:02:38

Day 2 : 08.00 am to 18.02 pm

- Grd level expanding cement filling
- Grd level wet joint rebar installation
- Grd level modular mould installation
- Grd level wet joint concreting

Day 2 of 9



CAM 1



Day 2 of 9

THANK YOU

