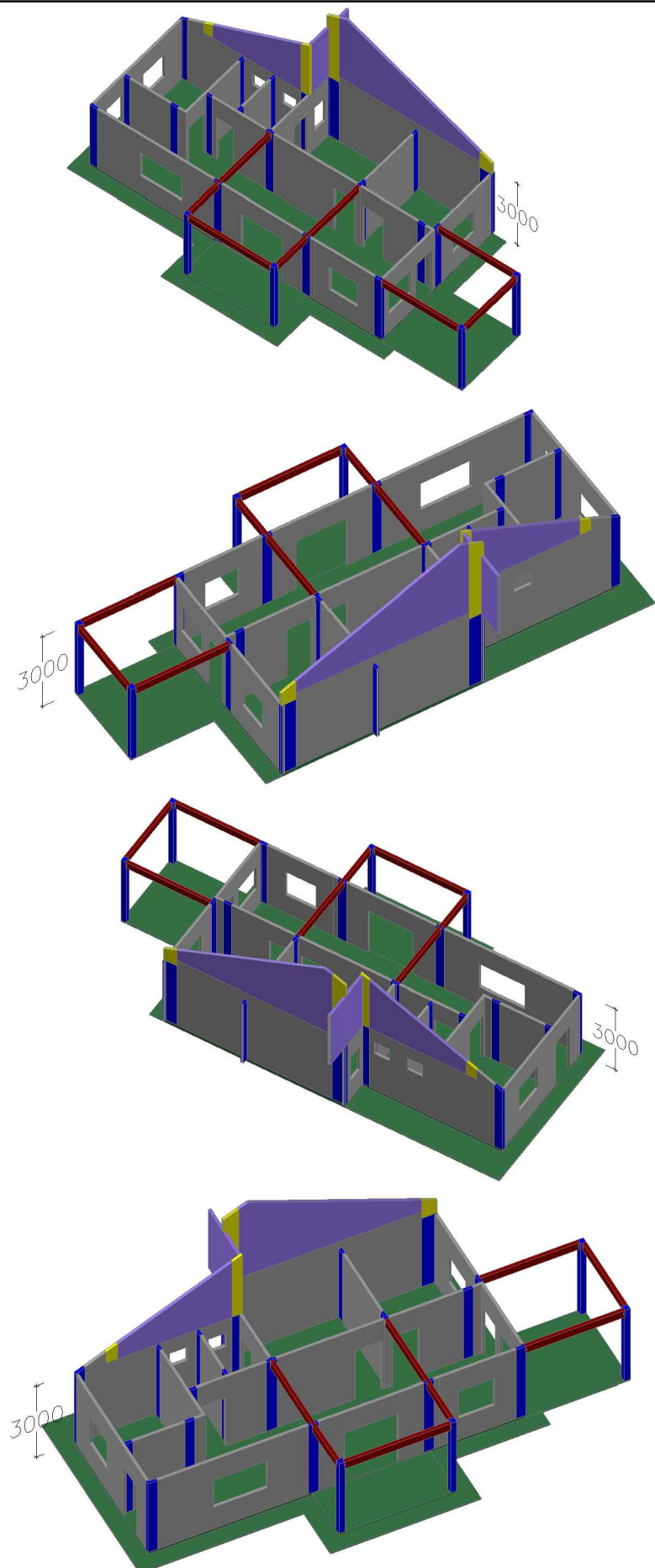
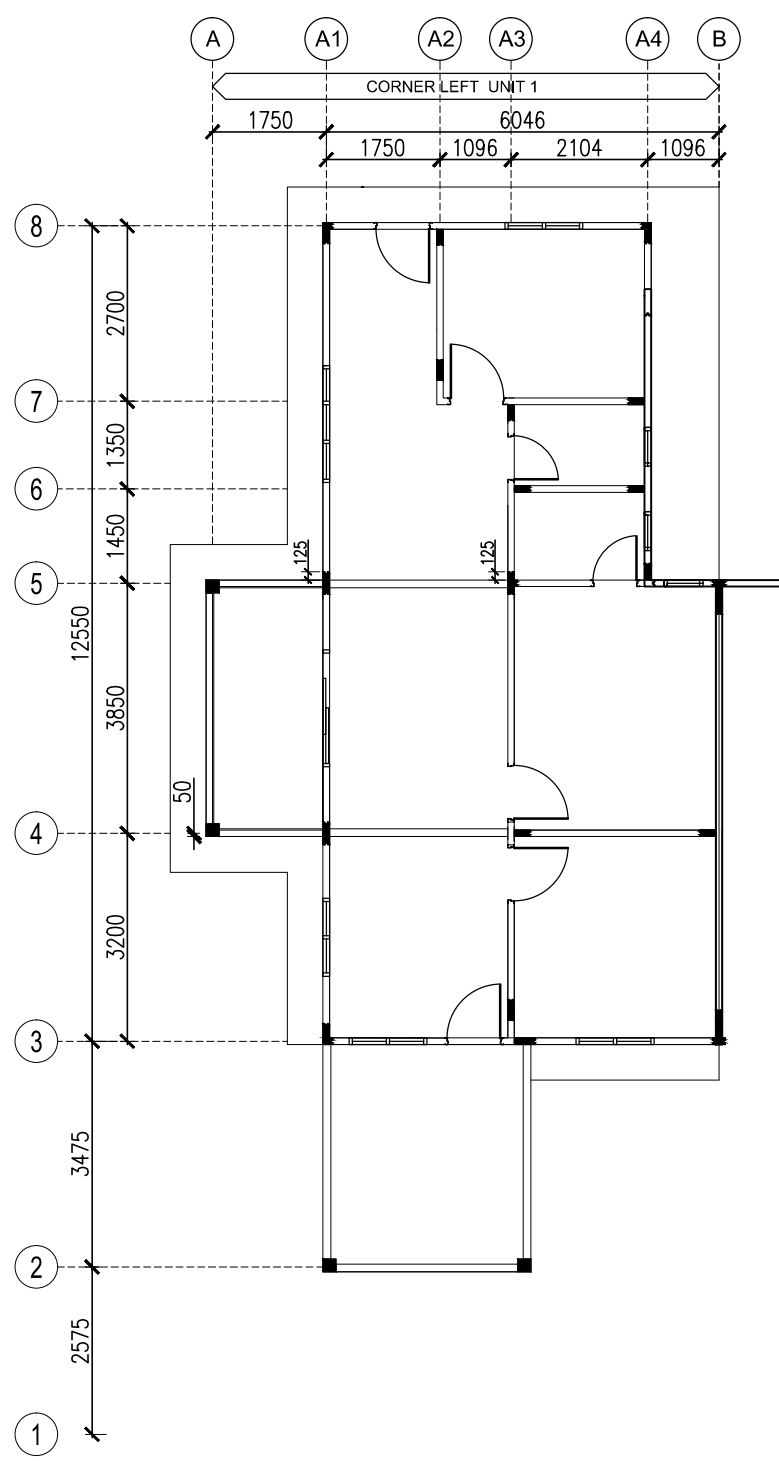


Single Storey Terrace House
Corner Left Unit : RM 15,834.60

86% Precast Product at Factory
 14% Wet work on Site (by system formwork)

Item	Description	Concrete Volume (m³)
1)	Precast Panel (18pcs)	14.388
2)	Precast Beam (6pcs)	0.786
3)	Wet Joint (27nos)	2.420
Total Concrete Volume		17.594

Calculation					
Item	Description	Concrete Volume (m³)	Wall Area - 100mm thk (m²)	Rate / m² (RM)	Total Amount per unit (RM)
1)	Precast Panel + Precast Beam + Wet Joint	17.594	175.940	90.00	15,834.60



SYSTEM PROVIDER
HC PRECAST SYSTEM SDN. BHD. (586697-M)
 No.23B, Jalan Seri Sarawak 20B/KS2, Taman Seri Andalas,
 41200 Klang, Selangor D.E. Tel:03-3323 3993 Fax:03-3324 3993
 e-mail:enquiry@hccprecast.com, www.hccprecast.com
 DETAILS SHOWN IN THIS DRAWING ARE PROPERTY OF HC PRECAST SYSTEM & PROTECTED BY PATENTS. ALL COPYRIGHT ARE RESERVED. (US 6,829,870 B2) & (MY-124213-A)

MANUFACTURER
HC MANUFACTURING SDN. BHD. (585570-T)
 No.23-1, Jalan Seri Sarawak 20B/KS2, Taman Seri Andalas,
 41200 Klang, Selangor D.E.
 Tel:03-3323 3993 Fax:03-3324 3993

DRAWN : ZUL
 DATE : AUGUST 2014
 CHECKED : LEE
 EXAM'D : MNG
 APPR'D : MNG
 SCALE : NTS

Single Storey Terrace House
Corner Left Unit

DRAWING TITLE : **5**
 Single Storey Terrace House
 DRAWING NO : HC/WP REV : -
 SYSTEM : - REV : -