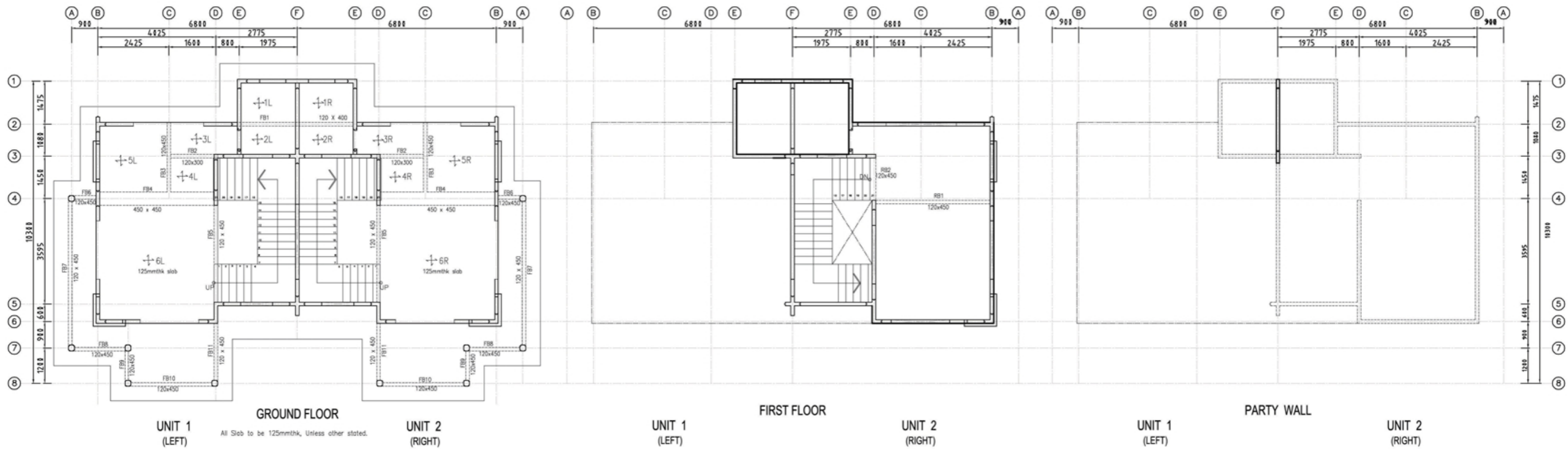


Calculation Base on Training Unit



FLOOR BEAM (per unit)

Cast Insitu Concrete : G25

	Size (m)	Area (Formwork)		Volume (m ³)	Weight (Tonnes)	
		(m ²)	(ft ²)			
1	FB1	120 x 400	1.242	13.369	0.061	0.146
2	FB2	120 x 300	0.695	7.481	0.031	0.074
3	FB3	120 x 450	1.728	18.600	0.089	0.214
4	FB4	450 x 450	4.295	46.231	0.578	1.387
5	FB5	120 x 450	2.963	31.893	0.129	0.310
6	FB6	120 x 450	0.754	8.116	0.039	0.094
7	FB7	120 x 450	4.992	53.733	0.264	0.634
8	FB8	120 x 450	1.759	18.934	0.089	0.223
9	FB9	120 x 450	1.02	10.979	0.054	0.130
10	FB10	120 x 450	2.815	30.300	0.149	0.358
11	FB11	120 x 450	1.978	21.291	0.105	0.252
			24.241	260.928	1.592	3.821

Omitted			
FB1	22.999	247.559	

	Area (Formwork)	
	(m ²)	(ft ²)
Floor Beam	22.999	247.559
Slab Mould	24.344	262.037
Top External Side Mould	2.614	28.134
	49.957	537.730

Floor Beam & Floor Slab (1 group 6 workers)

1 group (6 persons) to install Floor beam & Slab Mould

Labour Cost : RM150 (per day/8hours)

6 x RM150 x 1day = RM300
 RM300 / 537.73ft² = RM0.55

FLOOR SLAB SLAB MOULD(per unit)

Cast Insitu Concrete : G25

	Area (Slab Mould)	Volume Concrete	Weight		
				(m ²)	(ft ²)
1	1L	2.513	27.050	0.428	1.027
2	2L	1.78	19.160	0.322	0.773
3	3L	2.18	23.465	0.357	0.857
4	4L	1.724	18.557	0.296	0.710
5	5L	5.17	55.649	0.808	1.999
6	6L	15.27	164.365	2.207	5.297
		28.637	308.246	4.418	10.603

Omitted			
1L & 2L	24.344	262.037	

FLOOR SLAB TOP EXTERNAL SIDE MOULD(per unit)

Cast Insitu Concrete : G25

refer from gridline	Floor Slab	Area (Top External Side Mould)	
		(m ²)	(ft ²)
1	E1 ~ F1	0.407	4.381
2	E1 ~ E2	0.295	3.175
3	E2 ~ E3	0.072	0.775
4	D3 ~ F3	0.572	6.157
5	C2 ~ E2	0.293	3.148
6	B2 ~ C2	0.311	3.344
7	B2 ~ B4	0.324	3.485
8	B4 ~ B6	0.529	5.698
9	B6 ~ D6	0.552	5.940
10	D5 ~ D6	0.101	1.083
11	D4 ~ D5	0.505	5.436
		3.960	42.622

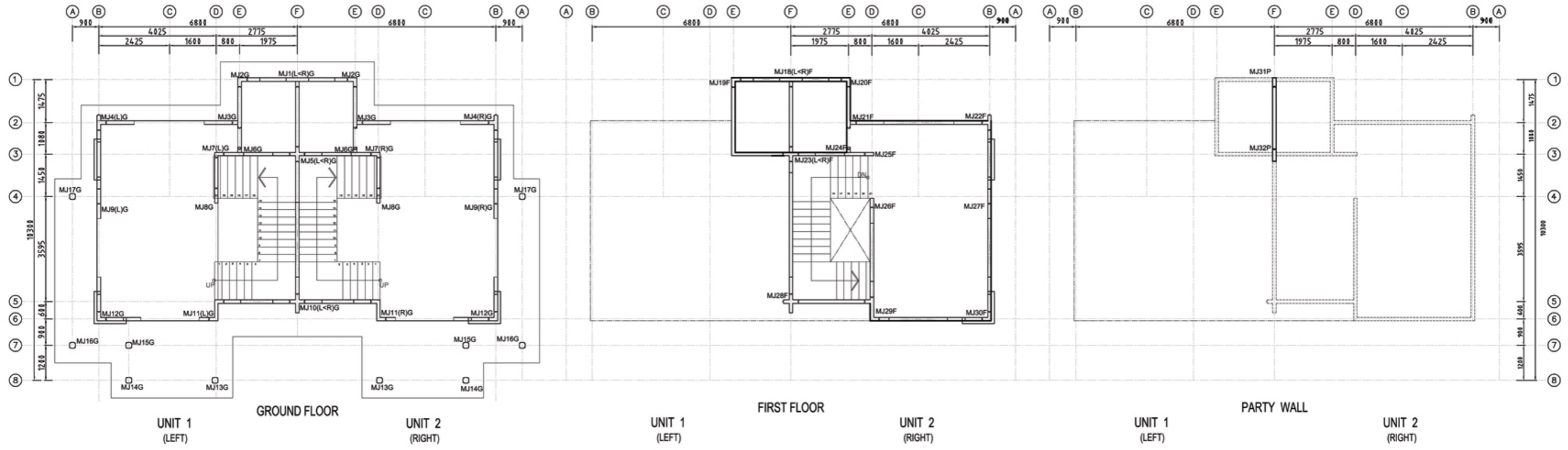
Omitted		
1L & 2L	2.614	28.134

ROOF BEAM (per unit)

Cast Insitu Concrete : G25

	Size (m)	Area (Formwork)		Volume Concrete	Weight (Tonnes)	
		(m ²)	(ft ²)			
1	RB1	120 x 450	3.968	42.711	0.211	0.506
2	RB2	120 x 450	1.479	15.920	0.078	0.187
			5.447	58.631	0.289	0.694

CLIENT HC MANUFACTURING SDN. BHD. (585570-1) No.23-1, Jalan Seri Sarawak 20B/KS2, Taman Seri Andalas, 41200 Klang, Selangor D.E. Tel:03-3323 7999 Fax:03-3323 8993	CONTRACTOR HC MACHINERY & ENGINEERING SDN. BHD. (585604-X) No.23A, Jalan Seri Sarawak 20B/KS2, Taman Seri Andalas, 41200 Klang, Selangor D.E. Tel:03-3324 9339 Fax:03-3324 8993	SYSTEM PROVIDER HC PRECAST SYSTEM SDN. BHD. (586697-M) No.23B, Jln Seri Sarawak 20B/KS2, Tmn Seri Andalas, 41200 Klang, Selangor D.E. Tel:03-3323 5999 Fax:03-3323 8993 e-mail: enquiry@hccprecast.com.my Http://www.hccprecast.com.my DETAILS SHOWN IN THIS DRAWING ARE PROPERTY OF HC PRECAST SYSTEM & PROTECTED BY PATENTS. ALL COPYRIGHT ARE RESERVED. (US 6,829,870 B2) & (MY-124213-A)	PROJECT TITLE DOUBLE STOREY TRAINING UNIT AT RASA FACTORY	DRAWN : KELLY DATE : JUNE 09 CHECKED : 3993 EXAM'D : 3993 APPR'D : 3993 SCALE : NTS	DRAWING TITLE : COST OF INSTALLATION INSTALLATION OF BEAM & SLAB MOULD DRAWING NO : HC/RSU/COI/B&S SYSTEM : -
--	---	---	---	--	---



COLUMN

Ground Floor
Cast In situ Concrete : G25

Unit 1	Area (Formwork) (m ²)	Area (Rebar) (m ²)	Volume (m ³)	Weight (Tonnes)	Area (Alu. Mould) (m ²)	Area (Alu. Mould) (#2)
MJ1(L-R)G	1418	15263	0.082	0.197	1705	13.352
MJ2G	3.667	39471	0.214	0.534	446	43.007
MJ3G	1449	15397	0.084	0.202	1609	17.319
MJ4(L)G	4425	47630	0.229	0.530	586	63.077
MJ5(L-R)G	5674	61074	0.379	0.930	654	70.386
MJ6G	0.865	9311	0.043	0.115	161	17.330
MJ7(L)G	2828	30440	0.164	0.394	345	37.135
MJ8G	4136	44320	0.219	0.526	4595	49.456
MJ9(L)G	1214	13067	0.141	0.338	2915	31.379
MJ10(L-R)G	5953	64073	0.356	0.834	8215	83.426
MJ11(L)G	5898	63486	0.349	0.838	7838	84.568
MJ11	1839	19795	0.109	0.262	2350	25.290
MJ13G	2.56	27556	0.123	0.307	2.8	30.139
MJ14G	2.56	27556	0.123	0.307	2.8	30.139
MJ15G	2.56	27556	0.123	0.307	2.8	30.139
MJ16G	2.56	27556	0.123	0.307	2.8	30.139
MJ17G	2.56	27556	0.123	0.307	2.8	30.139
Unit 2	32.186	561510	3.084	7.234	65146	701.229
MJ2G	3.667	39471	0.214	0.534	446	43.007
MJ3G	1449	15397	0.084	0.202	1609	17.319
MJ4(R)G	4425	47630	0.229	0.530	586	63.077
MJ6G	0.865	9311	0.043	0.115	161	17.330
MJ7(R)G	2828	30440	0.164	0.394	345	37.135
MJ8G	4136	44320	0.219	0.526	4595	49.456
MJ9(R)G	1214	13067	0.141	0.338	3878	41.762
MJ11(R)G	5898	63486	0.349	0.838	7838	84.568
MJ12	1839	19795	0.109	0.262	2350	25.290
MJ13G	2.56	27556	0.123	0.307	2.8	30.139
MJ14G	2.56	27556	0.123	0.307	2.8	30.139
MJ15G	2.56	27556	0.123	0.307	2.8	30.139
MJ16G	2.56	27556	0.123	0.307	2.8	30.139
MJ17G	2.56	27556	0.123	0.307	2.8	30.139
Unit 1	39.121	421095	2.197	5.273	49.649	534.413
Unit 2	91.287	961605	5.211	12.506	114.795	1215.642

COLUMN

First Floor
Cast In situ Concrete : G25

Unit 1	Area (Formwork) (m ²)	Area (Rebar) (m ²)	Volume (m ³)	Weight (Tonnes)	Area (Alu. Mould) (m ²)	Area (Alu. Mould) (#2)
MJ18(L-R)F	1343	14456	0.078	0.187	1609	17.319
MJ19F	3.865	41603	0.202	0.483	4711	50.709
MJ20F	3471	37362	0.205	0.487	4408	45.295
MJ21F	1343	14456	0.078	0.187	1609	17.319
MJ22F	4834	51817	0.279	0.670	5123	59.803
MJ23(L-R)F	5928	63308	0.366	0.878	6675	71.949
MJ24F	0.819	8.816	0.046	0.110	1.118	16.540
MJ25F	2.521	27.136	0.125	0.3	2.999	27.975
MJ26F	2.521	27.136	0.125	0.3	2.999	27.975
MJ27F	3471	37362	0.205	0.487	3445	37.060
MJ28F	3142	33820	0.184	0.442	3767	40.548
MJ29F	7328	78378	0.433	1.039	8389	92.451
MJ30F	1564	16835	0.089	0.223	2049	22.083
Unit 1	42.13	453434	2.415	5.796	48902	526.376

COLUMN

Party Wall
Cast In situ Concrete : G25

Unit 1	Area (Formwork) (m ²)	Area (Rebar) (m ²)	Volume (m ³)	Weight (Tonnes)	Area (Alu. Mould) (m ²)	Area (Alu. Mould) (#2)
MJ31(L-R)P	1637	174052	0.08	0.192	2003	21.282
MJ32(L-R)P	2037	219261	0.106	0.252	2455	26.425
Unit 1	3.654	39331	0.186	0.444	446	48.007

Column Rebar (1 group 4 workers)
2 group (8 persons) to install 31 nos column rebar.
Labour Cost : RM50 (per day/8 hours)

3 x RM50 x 1 day = RM400.00
RM400 / 1236.65ff = RM.32

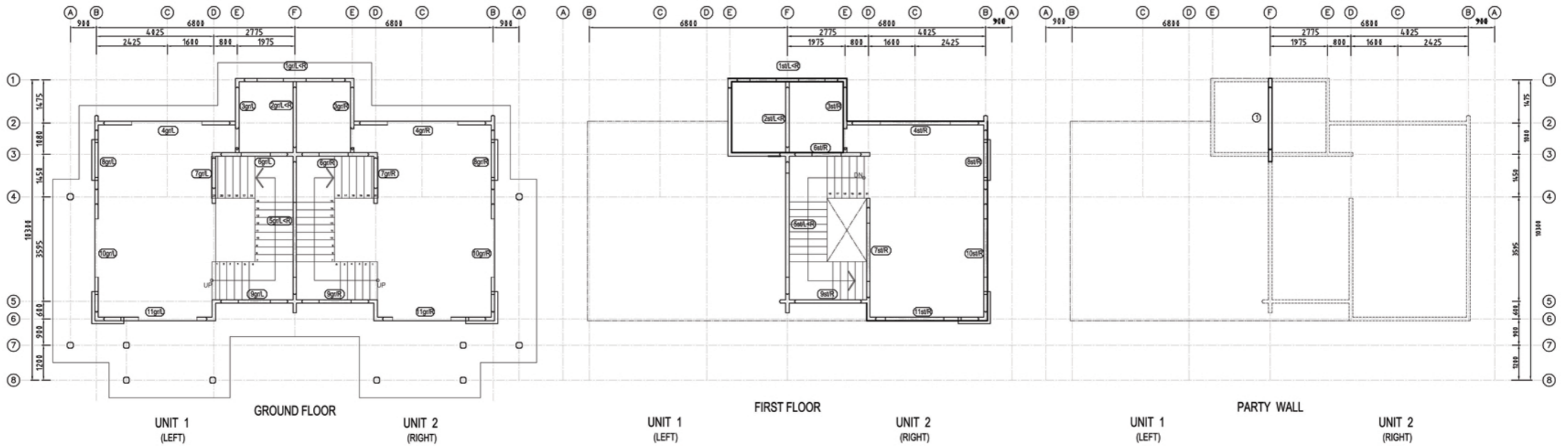
Column Mould (1 group 4 workers)
2 group (8 persons) to install 31 nos column moulds.
Labour Cost : RM50 (per day/8 hours)

3 x RM50 x 2 days = RM300.00
RM300 / 1236.65ff = RM.24

Column Casting (1 group 4 workers)
1 group (8 persons) to cast 31 nos columns.
Labour Cost : RM50 (per day/8 hours)

3 x RM50 x 1 day = RM400.00
RM400 / 1236.65ff = RM.32

<p>CLIENT</p> <p>HC MANUFACTURING SDN. BHD. (585570-T) No.23-1, Jalan Seri Sarawak 20B/KS2, Taman Seri Andalas, 41200 Klang, Selangor D.E. Tel:03-3323 7999 Fax:03-3323 8993</p>	<p>CONTRACTOR</p> <p>HC MACHINERY & ENGINEERING SDN. BHD. (585604-X) No.23A, Jalan Seri Sarawak 20B/KS2, Taman Seri Andalas, 41200 Klang, Selangor D.E. Tel:03-3324 9339 Fax:03-3324 8993</p>	<p>SYSTEM PROVIDER</p> <p>HC PRECAST SYSTEM SDN. BHD. (586697-M) No.23B, Jln Seri Sarawak 20B/KS2, Tmn Seri Andalas, 41200 Klang, Selangor D.E. Tel:03-3323 5999 Fax:03-3323 8993 e-mail : enquiry@hccprecast.com.my Http://www.hccprecast.com.my</p> <p>DETAILS SHOWN IN THIS DRAWING ARE PROPERTY OF HC PRECAST SYSTEM & PROTECTED BY PATENTS. ALL COPYRIGHT ARE RESERVED. (US 6,829,870 B2) & (MY-124213-A)</p>	<p>PROJECT TITLE</p> <p>DOUBLE STOREY TRAINING UNIT AT RASA FACTORY</p>	<p>DRAWN : KELLY</p>	<p>DRAWING TITLE :</p> <p>COST OF INSTALLATION INSTALLATION OF COLUMN</p>
				<p>DATE : JUNE 09</p> <p>CHECKED : 3993</p> <p>EXAMD : 3993</p> <p>APPRD : 3993</p> <p>SCALE : NTS</p>	



PANEL

Ground Floor

Precast Concrete : G30

Unit 1	Panel Name	Area (Formwork)		Volume (m ³)	Weight (Tonnes)	
		(m ²)	(ft ²)			
1	1gr/L<R	3470(OP1&OP1)	10.692	115.084	1.283	3.079
2	2gr/L<R	2075	6.967	74.989	0.836	2.006
3	3gr/L	2155(D1)	5.683	61.175	0.682	1.637
4	4gr/L	4345(OP2)	9.958	107.191	1.195	2.868
5	5gr/L<R	4565(OP6)	10.758	115.802	1.291	3.098
6	6gr/L	2295(OP4)	6.517	70.145	0.782	1.877
7	7gr/L	1065	3.467	37.315	0.416	0.998
8	8gr/L	2050(OP3)	6.000	64.583	0.72	1.728
9	9gr/L	2295(OP8)	6.267	67.454	0.752	1.805
10	10gr/L	3715(OP5&OP7)	8.025	86.380	0.963	2.311
11	11gr/L	3545(OP5&OP7)	7.425	79.922	0.891	2.138
			81.758	880.039	9.811	23.546
Unit 2						
12	3gr/R	2155(D1)	5.683	61.175	0.682	1.637
13	4gr/R	4345(OP2)	9.958	107.191	1.195	2.868
14	6gr/R	2295(OP4)	6.517	70.145	0.782	1.877
15	7gr/R	1065	3.467	37.315	0.416	0.998
16	8gr/R	2050(OP3)	6.000	64.583	0.72	1.728
17	9gr/R	2295(OP8)	6.267	67.454	0.752	1.805
18	10gr/R	3715(OP5&OP7)	8.025	86.380	0.963	2.311
19	11gr/R	3545(OP5&OP7)	7.425	79.922	0.891	2.138
			53.342	574.165	6.401	15.362
			135.100	1454.204	16.212	38.909

PANEL

First Floor

Precast Concrete : G30

	Panel Name	Area (Formwork)		Volume Concrete (m ³)	Weight (Tonnes)	
		(m ²)	(ft ²)			
1	1st/L<R	3470(OP1&OP1)	10.050	108.177	1.206	2.894
2	2st/L<R	2075	6.617	71.221	0.794	1.906
3	3st/R	2155(D1)	5.317	57.228	0.638	1.531
4	4st/R	4345(OP11)	11.100	119.479	1.352	3.197
5	5st/L<R	4565(OP9)	7.275	78.307	0.873	2.095
6	6st/R	2295(OP4)	6.133	66.019	0.736	1.766
7	7st/R	3150(OP10)	7.533	81.088	0.904	2.170
8	8st/R	2050(OP3)	5.492	59.112	0.659	1.582
9	9st/R	2295	3.650	39.288	0.438	1.051
10	10st/R	3715(OP5&OP7)	8.925	96.068	1.071	2.570
11	11st/R	3545(OP5&OP7)	8.375	90.148	1.005	2.412
			80.467	866.136	9.656	23.174

Panel Installation (1 group 4 workers)

1 group (4 persons) to Install 19 Panels

Labour Cost : RM 50 (per day/8hours)

4 x RM50 x 1/2day = RM100
 RM100/1454.20ft² = RM0.07

PANEL

Party Wall

Precast Concrete : G30

1	Panel Name	Area (Formwork)		Volume Concrete (m ³)	Weight (Tonnes)
		(m ²)	(ft ²)		
	2155	4.417	47.541	0.530	1.272
		4.417	47.541	0.53	1.272

Panel Installation (1 group 4 workers) As per Standard Estimation

1 group (4 persons) can Install 25 to 40pcs Panels

Labour Cost : RM 50 (per day/8hours)

4 X RM50 = RM200
 Assumed each panel 75ft²,
 75ft² X 40panel = 3000ft²
 Therefore,
 RM200/3000ft² = RM0.07

CLIENT HC MANUFACTURING SDN. BHD. (585570-1) No.23-1, Jalan Seri Sarawak 20B/KS2, Taman Seri Andalas, 41200 Klang, Selangor D.E. Tel:03-3323 7999 Fax:03-3323 8993	CONTRACTOR HC MACHINERY & ENGINEERING SDN. BHD. (585604-X) No.23A, Jalan Seri Sarawak 20B/KS2, Taman Seri Andalas, 41200 Klang, Selangor D.E. Tel:03-3324 9339 Fax:03-3324 8993	SYSTEM PROVIDER HC PRECAST SYSTEM SDN. BHD. (586697-M) No.23B, Jln Seri Sarawak 20B/KS2, Taman Seri Andalas, 41200 Klang, Selangor D.E. Tel:03-3323 5999 Fax:03-3323 8993 e-mail: enquiry@hccprecast.com.my Http://www.hccprecast.com.my DETAILS SHOWN IN THIS DRAWING ARE PROPERTY OF HC PRECAST SYSTEM & PROTECTED BY PATENTS. ALL COPYRIGHT ARE RESERVED. (US 6,829,870 B2) & (MY-124213-A)	PROJECT TITLE DOUBLE STOREY TRAINING UNIT AT RASA FACTORY	DRAWN : KELLY DATE : JUNE 09 CHECKED : 3993 EXAMD : 3993 APPRD : 3993 SCALE : NTS	DRAWING TITLE : COST OF INSTALLATION INSTALLATION OF PANEL DRAWING NO : HC/RSU/COI/PNL SYSTEM : -
--	---	---	---	--	---

Project : Rasa Factory Semi-D Training Unit

PANEL Ground Floor Precast Concrete : G30			First Floor Precast Concrete : G30			Party Wall Precast Concrete : G30		
Unit	Panel Name	Area (Formwork) (m ²) (m ²)	Unit	Panel Name	Area (Formwork) (m ²) (m ²)	Unit	Panel Name	Area (Formwork) (m ²) (m ²)
1	1prL-4E	3470/115308	1	1prL-4E	3470/115308	1	1prL-4E	3470/115308
2	2prL-4E	4697	2	2prL-4E	4697	2	2prL-4E	4697
3	3prL-4E	4697	3	3prL-4E	4697	3	3prL-4E	4697
4	4prL-4E	4697	4	4prL-4E	4697	4	4prL-4E	4697
5	5prL-4E	4697	5	5prL-4E	4697	5	5prL-4E	4697
6	6prL-4E	4697	6	6prL-4E	4697	6	6prL-4E	4697
7	7prL-4E	4697	7	7prL-4E	4697	7	7prL-4E	4697
8	8prL-4E	4697	8	8prL-4E	4697	8	8prL-4E	4697
9	9prL-4E	4697	9	9prL-4E	4697	9	9prL-4E	4697
10	10prL-4E	4697	10	10prL-4E	4697	10	10prL-4E	4697
11	11prL-4E	4697	11	11prL-4E	4697	11	11prL-4E	4697
12	12prL-4E	4697	12	12prL-4E	4697	12	12prL-4E	4697
13	13prL-4E	4697	13	13prL-4E	4697	13	13prL-4E	4697
14	14prL-4E	4697	14	14prL-4E	4697	14	14prL-4E	4697
15	15prL-4E	4697	15	15prL-4E	4697	15	15prL-4E	4697
16	16prL-4E	4697	16	16prL-4E	4697	16	16prL-4E	4697
17	17prL-4E	4697	17	17prL-4E	4697	17	17prL-4E	4697
18	18prL-4E	4697	18	18prL-4E	4697	18	18prL-4E	4697
19	19prL-4E	4697	19	19prL-4E	4697	19	19prL-4E	4697
20	20prL-4E	4697	20	20prL-4E	4697	20	20prL-4E	4697
21	21prL-4E	4697	21	21prL-4E	4697	21	21prL-4E	4697
22	22prL-4E	4697	22	22prL-4E	4697	22	22prL-4E	4697
23	23prL-4E	4697	23	23prL-4E	4697	23	23prL-4E	4697
24	24prL-4E	4697	24	24prL-4E	4697	24	24prL-4E	4697
25	25prL-4E	4697	25	25prL-4E	4697	25	25prL-4E	4697
26	26prL-4E	4697	26	26prL-4E	4697	26	26prL-4E	4697
27	27prL-4E	4697	27	27prL-4E	4697	27	27prL-4E	4697
28	28prL-4E	4697	28	28prL-4E	4697	28	28prL-4E	4697
29	29prL-4E	4697	29	29prL-4E	4697	29	29prL-4E	4697
30	30prL-4E	4697	30	30prL-4E	4697	30	30prL-4E	4697
31	31prL-4E	4697	31	31prL-4E	4697	31	31prL-4E	4697
32	32prL-4E	4697	32	32prL-4E	4697	32	32prL-4E	4697
33	33prL-4E	4697	33	33prL-4E	4697	33	33prL-4E	4697
34	34prL-4E	4697	34	34prL-4E	4697	34	34prL-4E	4697
35	35prL-4E	4697	35	35prL-4E	4697	35	35prL-4E	4697
36	36prL-4E	4697	36	36prL-4E	4697	36	36prL-4E	4697
37	37prL-4E	4697	37	37prL-4E	4697	37	37prL-4E	4697
38	38prL-4E	4697	38	38prL-4E	4697	38	38prL-4E	4697
39	39prL-4E	4697	39	39prL-4E	4697	39	39prL-4E	4697
40	40prL-4E	4697	40	40prL-4E	4697	40	40prL-4E	4697
41	41prL-4E	4697	41	41prL-4E	4697	41	41prL-4E	4697
42	42prL-4E	4697	42	42prL-4E	4697	42	42prL-4E	4697
43	43prL-4E	4697	43	43prL-4E	4697	43	43prL-4E	4697
44	44prL-4E	4697	44	44prL-4E	4697	44	44prL-4E	4697
45	45prL-4E	4697	45	45prL-4E	4697	45	45prL-4E	4697
46	46prL-4E	4697	46	46prL-4E	4697	46	46prL-4E	4697
47	47prL-4E	4697	47	47prL-4E	4697	47	47prL-4E	4697
48	48prL-4E	4697	48	48prL-4E	4697	48	48prL-4E	4697
49	49prL-4E	4697	49	49prL-4E	4697	49	49prL-4E	4697
50	50prL-4E	4697	50	50prL-4E	4697	50	50prL-4E	4697

Panel Installation (1 group & workers)
1 group (4 persons) to install 19 Panels
Labour Cost: RM150 (per day/8 hours)
4 x RM150 = RM600
RM600 / 168.00hr = RM3.57

Installation of Panel Per # is RM3.57

COLUMN Ground Floor Cast In situ Concrete : G25			First Floor Cast In situ Concrete : G25			Party Wall Cast In situ Concrete : G25					
Unit	Area (Alu. Mould)	Area (Formwork)	Unit	Area (Alu. Mould)	Area (Formwork)	Unit	Area (Alu. Mould)	Area (Formwork)			
1	M17R-4R/G	1.705	18.232	1	M17R-4R/G	1.705	18.232	1	M17R-4R/G	1.705	18.232
2	M17G	2.66	28.007	2	M17G	2.66	28.007	2	M17G	2.66	28.007
3	M17G	1.809	17.319	3	M17G	1.809	17.319	3	M17G	1.809	17.319
4	M17R-4G	2.56	27.077	4	M17R-4G	2.56	27.077	4	M17R-4G	2.56	27.077
5	M17R-4R/G	2.54	26.998	5	M17R-4R/G	2.54	26.998	5	M17R-4R/G	2.54	26.998
6	M17G	1.61	17.320	6	M17G	1.61	17.320	6	M17G	1.61	17.320
7	M17R-4G	2.45	27.122	7	M17R-4G	2.45	27.122	7	M17R-4G	2.45	27.122
8	M17G	2.598	28.656	8	M17G	2.598	28.656	8	M17G	2.598	28.656
9	M17R-4G	2.515	27.219	9	M17R-4G	2.515	27.219	9	M17R-4G	2.515	27.219
10	M17R-4R/G	2.515	27.219	10	M17R-4R/G	2.515	27.219	10	M17R-4R/G	2.515	27.219
11	M17R-4R/G	2.515	27.219	11	M17R-4R/G	2.515	27.219	11	M17R-4R/G	2.515	27.219
12	M17R-4R/G	2.515	27.219	12	M17R-4R/G	2.515	27.219	12	M17R-4R/G	2.515	27.219
13	M17R-4R/G	2.515	27.219	13	M17R-4R/G	2.515	27.219	13	M17R-4R/G	2.515	27.219
14	M17R-4R/G	2.515	27.219	14	M17R-4R/G	2.515	27.219	14	M17R-4R/G	2.515	27.219
15	M17R-4R/G	2.515	27.219	15	M17R-4R/G	2.515	27.219	15	M17R-4R/G	2.515	27.219
16	M17R-4R/G	2.515	27.219	16	M17R-4R/G	2.515	27.219	16	M17R-4R/G	2.515	27.219
17	M17R-4R/G	2.515	27.219	17	M17R-4R/G	2.515	27.219	17	M17R-4R/G	2.515	27.219
18	M17G	2.66	28.007	18	M17G	2.66	28.007	18	M17G	2.66	28.007
19	M17G	1.809	17.319	19	M17G	1.809	17.319	19	M17G	1.809	17.319
20	M17R-4G	2.56	27.077	20	M17R-4G	2.56	27.077	20	M17R-4G	2.56	27.077
21	M17G	1.61	17.320	21	M17G	1.61	17.320	21	M17G	1.61	17.320
22	M17R-4G	2.45	27.122	22	M17R-4G	2.45	27.122	22	M17R-4G	2.45	27.122
23	M17G	2.598	28.656	23	M17G	2.598	28.656	23	M17G	2.598	28.656
24	M17R-4G	2.515	27.219	24	M17R-4G	2.515	27.219	24	M17R-4G	2.515	27.219
25	M17R-4R/G	2.515	27.219	25	M17R-4R/G	2.515	27.219	25	M17R-4R/G	2.515	27.219
26	M17R-4R/G	2.515	27.219	26	M17R-4R/G	2.515	27.219	26	M17R-4R/G	2.515	27.219
27	M17R-4R/G	2.515	27.219	27	M17R-4R/G	2.515	27.219	27	M17R-4R/G	2.515	27.219
28	M17R-4R/G	2.515	27.219	28	M17R-4R/G	2.515	27.219	28	M17R-4R/G	2.515	27.219
29	M17R-4R/G	2.515	27.219	29	M17R-4R/G	2.515	27.219	29	M17R-4R/G	2.515	27.219
30	M17R-4R/G	2.515	27.219	30	M17R-4R/G	2.515	27.219	30	M17R-4R/G	2.515	27.219
31	M17R-4R/G	2.515	27.219	31	M17R-4R/G	2.515	27.219	31	M17R-4R/G	2.515	27.219
32	M17R-4R/G	2.515	27.219	32	M17R-4R/G	2.515	27.219	32	M17R-4R/G	2.515	27.219
33	M17R-4R/G	2.515	27.219	33	M17R-4R/G	2.515	27.219	33	M17R-4R/G	2.515	27.219
34	M17R-4R/G	2.515	27.219	34	M17R-4R/G	2.515	27.219	34	M17R-4R/G	2.515	27.219
35	M17R-4R/G	2.515	27.219	35	M17R-4R/G	2.515	27.219	35	M17R-4R/G	2.515	27.219
36	M17R-4R/G	2.515	27.219	36	M17R-4R/G	2.515	27.219	36	M17R-4R/G	2.515	27.219
37	M17R-4R/G	2.515	27.219	37	M17R-4R/G	2.515	27.219	37	M17R-4R/G	2.515	27.219
38	M17R-4R/G	2.515	27.219	38	M17R-4R/G	2.515	27.219	38	M17R-4R/G	2.515	27.219
39	M17R-4R/G	2.515	27.219	39	M17R-4R/G	2.515	27.219	39	M17R-4R/G	2.515	27.219
40	M17R-4R/G	2.515	27.219	40	M17R-4R/G	2.515	27.219	40	M17R-4R/G	2.515	27.219
41	M17R-4R/G	2.515	27.219	41	M17R-4R/G	2.515	27.219	41	M17R-4R/G	2.515	27.219
42	M17R-4R/G	2.515	27.219	42	M17R-4R/G	2.515	27.219	42	M17R-4R/G	2.515	27.219
43	M17R-4R/G	2.515	27.219	43	M17R-4R/G	2.515	27.219	43	M17R-4R/G	2.515	27.219
44	M17R-4R/G	2.515	27.219	44	M17R-4R/G	2.515	27.219	44	M17R-4R/G	2.515	27.219
45	M17R-4R/G	2.515	27.219	45	M17R-4R/G	2.515	27.219	45	M17R-4R/G	2.515	27.219
46	M17R-4R/G	2.515	27.219	46	M17R-4R/G	2.515	27.219	46	M17R-4R/G	2.515	27.219
47	M17R-4R/G	2.515	27.219	47	M17R-4R/G	2.515	27.219	47	M17R-4R/G	2.515	27.219
48	M17R-4R/G	2.515	27.219	48	M17R-4R/G	2.515	27.219	48	M17R-4R/G	2.515	27.219
49	M17R-4R/G	2.515	27.219	49	M17R-4R/G	2.515	27.219	49	M17R-4R/G	2.515	27.219
50	M17R-4R/G	2.515	27.219	50	M17R-4R/G	2.515	27.219	50	M17R-4R/G	2.515	27.219

Column Rebar (1 group & workers)
2 group (8 persons) to install 21 no x column rebar.
Labour Cost: RM150 (per day/8 hours)
8 x RM150 = RM1200
RM1200 / 126.00hr = RM9.52

Installation of Column Rebar Per # is RM9.52

Column Mould (1 group & workers)
2 group (8 persons) to install 21 no x column mould.
Labour Cost: RM150 (per day/8 hours)
8 x RM150 = RM1200
RM1200 / 126.00hr = RM9.52

Installation of Column Mould Per # is RM9.52

Column Casting (1 group & workers)
1 group (8 persons) to cast 21 no x column.
Labour Cost: RM150 (per day/8 hours)
8 x RM150 = RM1200
RM1200 / 126.00hr = RM9.52

Column Casting Per # is RM9.52

SEQUENCE OF CONSTRUCTION					
Step	Description	GUIDE		COMBINE	
		Worker Qty	Working days per 2 Units	Worker Qty	Working days per 2 Units
Ground Floor					
1	a) Setting Out & Marking Position For Levelling				
	b) Installation of Plastic Plates				
2	a) Panel Unloading (1 person) & Installation				
	b) Filling Expandite Concrete				
	c) Column Rebar				
3	a) Installation of Column Mould				
	b) Column Casting				
4	Precast Staircase Unloading (1 person) & Installation				
5	a) Installation of Floor Beam & Slab Mould				
	b) Floor Beam & Slab Rebar				
	c) Floor Beam And Slab Casting				
First Floor					
6	a) Setting Out & Marking Position For Levelling				
	b) Installation of Plastic Plates				
	a) Panel Unloading (1 person) & Installation				
	b) Filling Expandite Concrete				
	c) Column Rebar				
7	a) Installation of Column Mould				
	b) Column Casting				
8					